



MINING FOUNDATION OF THE SOUTHWEST  
Thomas L. Aldrich, Executive Director  
PO Box 42317 , TUCSON, AZ 85733  
520-577-7519 (office), 520-577-7073 (fax)

September, 2020  
[www.miningfoundationsw.org](http://www.miningfoundationsw.org)  
[admin@miningfoundationsw.org](mailto:admin@miningfoundationsw.org)

# CONCENTRATES



## 38TH ANNUAL AMERICAN MINING HALL OF FAME TO GO VIRTUAL

The 38th Annual American Mining Hall of Fame Banquet and Awards Ceremony scheduled for December 5, 2020 will be a virtual event this year due to the circumstances with the COVID-19 virus. After continually monitoring the situation for the past 6 months, it has become evident that given health and safety considerations, holding a live, international event is just not possible this December. The number one goal of the Hall of Fame Committee is the health and safety of banquet attendees which is why we have decided to hold a live Virtual Event on December 5 beginning at 7 PM.

Planning is underway on how best to produce this year's ceremony with the technical assistance of Hexagon, the 2020 Industry Partnership Award Honoree. Although you will not be able to attend in person, the HOF Committee guarantees a top-notch event that will suitably recognize this year's slate of Honorees headlined by Lukas Lundin, Chairman of the Lundin Group of Companies.

The MFSW appreciates your continued support and patience as we work through the details for this year's virtual event. Remember, your sponsorships fund the Outreach Program.

## SPONSORSHIPS

Sponsorship for this virtual event are what will fund our Outreach program and coordinator for the coming year. The MFSW greatly appreciates those who have already donated and are listed on our website and below. For those who have contributed in the past, we appreciate your consideration for this year and hope that you will become a sponsor. Your sponsorships fund the Outreach Program which helps stimulate interest and understanding of mineral resources and the mining industry in today's youth.

**PLATINUM:** Hexagon Mining, M3 Engineering & Technology Corporation and Southwest Energy;

**GOLD:** Ames Construction, Cori Hoag, Doosan Bobcat, Empire Southwest, Mining & Metallurgical Society of America, Newmont, Pioneer Equipment, Resolution Copper, South32 and SRK Consulting;

**SILVER :** CalPortland, Civil & Environmental Consultants. Inc. (CEC), CTI, DeConcini McDonald Yetwin & Lacy, P.C., Florence Copper, Hudbay and KGHM (Carlota Copper Company),;

**OTHERS:** National Mining Hall of Fame & Museum



## President's Corner

### MESSAGE FROM PRESIDENT, Rebecca Martinez

#### FALL IS HERE...

We are officially in the fall season and even though our temperatures are still high, you can feel the cool air in the mornings and evenings. For my family we are busy again with softball and it is nice (which sounds weird) to be juggling all the balls again. For so long we have been hoping for life to get back to “normal” and now with our daughter in back to back softball tournaments, we long for a few days of rest. Funny. I hope this message reaches all of you being well and getting back to some kind of normalcy.

For the mining foundation we have been working hard on the banquet and evaluating all the options for the event. Due to health and safety of our members, their families and friends, we have decided to hold a live Virtual Event on December 5th. This is quite exciting and four Hall of Fame Committee, will be working hard to provide a top-notch event. Due to the virtual event, sponsorship will be very important to help support the outreach program.

Membership is currently at 130 members, which is down 7 from last year. We have only 5 new members this year. Your membership in the Foundation is tax deductible as allowed by law. Through membership dues and donations, the Mining Foundation of the Southwest is able to pursue its goals. Do you know of any colleagues or friends interested in joining the Foundation? If so, please help spread the word.

I hope you all get to enjoy this Fall season. The Hall of Fame Committee has some excellent ideas and I am looking forward to a great event in December. I wish you all a safe and healthy fall!



### Hall of Fame Chairman Andrew Soderman, Mine Manager Freeport McMoRan, Sierrita



The 38<sup>th</sup> Annual American Mining Hall of Fame Banquet has officially gone **Virtual**. Our world continues to change in response to the COVID-19 virus. I assure you that the number one goal of the Hall of Fame Committee will be to produce a top notch ceremony worthy of our inductees. We are collaborating with Hexagon Mining to create and produce the event..

Sponsorships are so important to insure the continued success of the Outreach Program. The MFSW appreciates your continued support and patience as we work through the details for this year's ceremony. I encourage everyone to refer to the Mining Foundation's website for updates on this year's event.

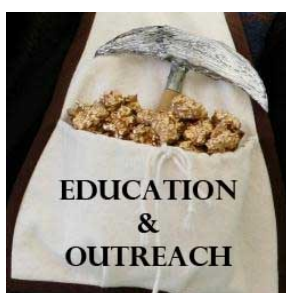
Remember, we need your sponsorships to fund the Outreach Program.



# LOWELL INSTITUTE FOR MINERAL RESOURCES

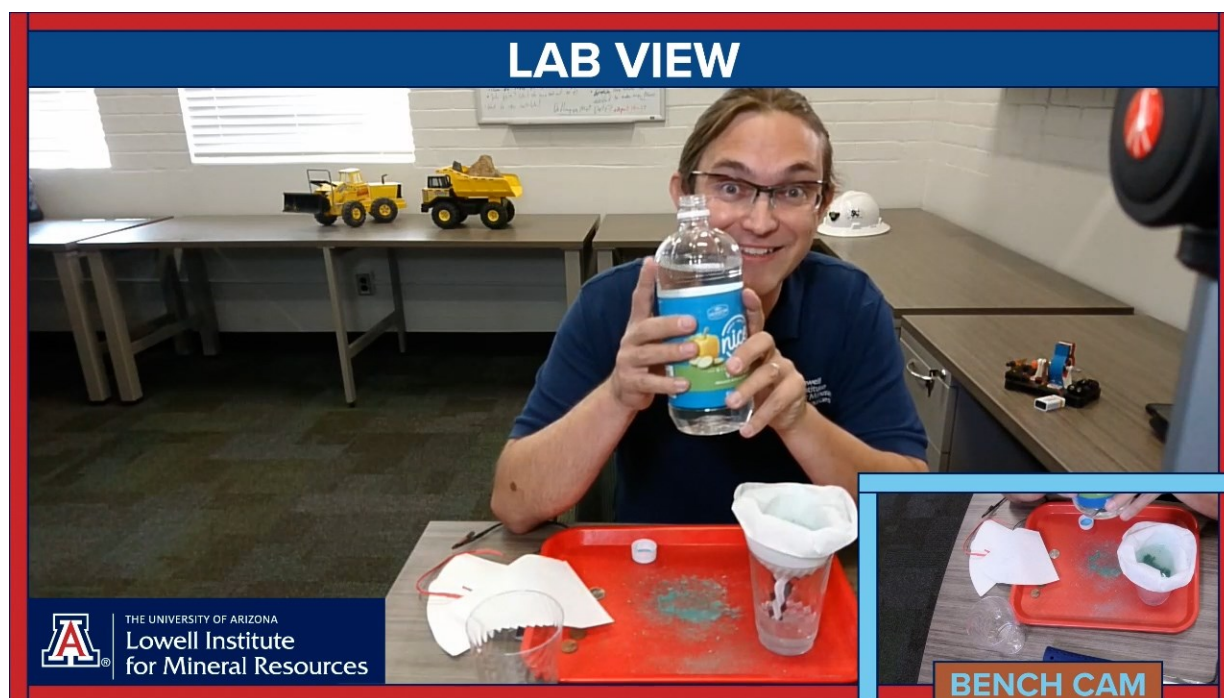


## OUTREACH CORNER BY CHRIS EARNEST



The nights have begun to cool a bit here in southern Arizona while students count the days until Thanksgiving break, a sure sign that fall is on its way. Many of those students will not have far to go this year as the dinner table has transformed into a desk for schoolwork while faces of classmate's flicker on a screen. The outreach program continues to adapt to the many different new modes of instruction to provide students with meaningful experiences that allow them to discover the importance of mining, no matter their learning environment. I have been adapting the classroom presentations to fit into a virtual format, continuing the "Minerals Make It" video series, and developing "virtual tours" related to mining and mineral resources.

Classrooms around the state are in full swing but that has not made things any easier on students, parents, or teachers. Most schools are employing a "hybrid learning" model which sees some students learning from home, some in a classroom, and some participating in both. In order to reach as many students as possible I am adapting the outreach presentations for virtual delivery. Students are able to interact with me, the demonstration, and each other as they learn about mining and how we use mineral resources to build our society. I am also taking the presentations to virtual science fairs as well.





## Outreach Cont.



The production of the YouTube series “Minerals Make It” continues apace as well. The newest video “Minerals and Electronics” introduces young learners to the mineral that holds all modern electronics together. It can be found, along with the other videos in the series, at

<https://www.youtube.com/playlist?list=PLvezXfWkBAA6F7xIkwrDD-k1uRQAZgPm6>

Please continue to share the series far and wide so others can discover the importance of mining and minerals. Keep an eye out for the next video in the series, “Minerals and Toothpaste.”



In order to showcase the importance of mining to the state of Arizona, along with its rich history, John Gengler, the intern, and I have completed the first of a series of “virtual tours” using the Google Earth Web platform. The first of these tours is a short hike through the ruins of the Old Pueblo Mine just east of Tucson, Arizona. The tour uses videos and 360 degree photo panoramas to allow users to explore the area virtually. By following along with this short hike, either from the air-conditioned comfort of their home or while hiking along, families can learn a little about the history and geology of mining near Tucson. The tour uses Google Earth Web and is accessible from the Chrome internet browser, by far the most common browser on school computers. Or from the free “Google Earth” app, available on smart-phones and tablets. If you would like to view the tour, please follow this link. It requires the most recent version of the Chrome web browser, or the Google Earth smart-phone app.

<https://earth.google.com/web/data=Mj8KPQo7CiExMnhQRIF5bjhndUkyWGNsSjBOazJMeTFVMnk2dFZGUGYSFgoUMDcxRThBMzg4ODE0RUlwOTZBNzQ>

If you have any questions about the tour, please don’t hesitate to email [Chris@earnest@arizona.edu](mailto:Chris@earnest@arizona.edu)

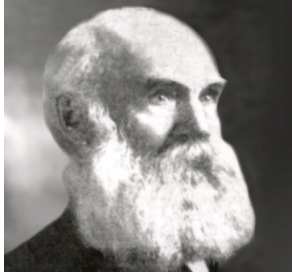


## December 5 Virtual Awards Ceremony to Induct the 2020 Mining's Past Honorees

**Noah S. Kellogg (1831 - 1903)**

**Prospector and Discover of Bunker Hill Mine**

**2020 Inductee from Mining's Past**



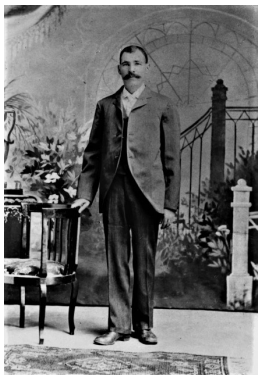
Noah S. Kellogg was a carpenter and prospector. He joined the rush to the Coeur d'Alene mining district in Idaho when he heard news of the discovery of gold, arriving with thousands of others in 1884, too late to locate a promising claim. In 1885, after working on a flume to carry water from a creek to potential placer gravels, he found himself suddenly unemployed when the project abruptly closed due to lack of funds. He sought a grubstake to go prospecting. A merchant, John Cooper and a small contractor, Origin Peck, reluctantly supplied Kellogg with supplies and a burro. The burro became the matter of much folklore. The grubstake was conditional on Kellogg taking the burro, which was a braying and annoying critter disturbing the people in Murray. Kellogg prospected along Milo Creek, a tributary of the South Fork of the Coeur d'Alene River. There are many versions as to the actual discovery of the Bunker Hill orebody, most involving the burro which apparently wandered off and was found near an outcrop bearing galena. Kellogg staked the ground. It soon became apparent that the discovery was a valuable one, and lawsuits over ownership followed. After the matter was settled in court, Kellogg retained a significant share in the mine and found himself wealthy, however, he squandered his earnings. He died in 1903, and is remembered for the discovery of the Bunker Hill mine and has the City of Kellogg named after him.



**John Barry "Black Jack" Newman (1862 – 1928)**

**"Nose for Ore"**

**2020 Inductee from Mining's Past**



"Black Jack" Newman was born in Chorna, Austro-Hungarian Empire. He immigrated to the US around 1876 and worked at various jobs as he traveled west; pushing coal cars in Pennsylvania, working in the copper mines of Michigan, and working on the Texas & Pacific railroad in Texas. By 1883, he arrived in Globe, Arizona and hired on as a mucker at the Old Dominion Mine. He had a "nose for ore" and staked or acquired numerous claims in the area west of Globe. J. Parke Channing, who would become a major force in the development of the Miami Copper Company, liked some of Newman's claims and optioned them. This required sinking a shaft to verify Channing's belief in the presence of secondary copper enrichment. Newman, superintendent for sinking the shaft, was so convinced there was ore that he disregarded orders telegraphed to stop work, hitting ore a day later. In less than four years from the initial discovery, Miami Copper Co was in production. It shares the honor with the Ray Mine as being Arizona's first large scale porphyry copper producer. Newman had other claims in the area that became part of the Inspiration Consolidated Copper Co. Newman invested money from these successful mining ventures into building apartment houses, and the Old Dominion Hotel in Globe. When asked why he built a four-story brick hotel in a shabby area, he replied it was necessary to have a place to wine and dine potential investors. By 1910 Newman moved to Santa Monica California to give his children a better education. Here, he invested in real estate and farming. He died in Santa Monica in 1928.



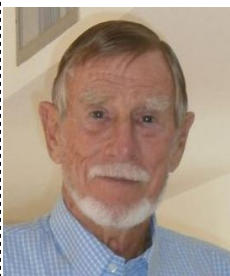
## December 5 Virtual Awards Ceremony to Induct the 2020 Mining's Past Honorees

### Lemuel Coover Shattuck (1866 - 1938) Miner, Rancher, Merchant, Banker 2020 Inductee from Mining's Past



Lemuel Shattuck left his home near Erie, Pennsylvania at age 17 to work at a family owned cattle ranch in Arizona. After 4 years of being a cowboy, he sought employment in mining, which paid three times more than cowboy's pay. The mine where he worked closed, which prompted Shattuck to head to other mining camps in the west. During the next two years, he worked at mines and placer fields in Arizona, Nevada, Utah and Montana. After working through the winter of 1887-88 at Butte, Montana, he decided Arizona was the place to be. He arrived back in Bisbee flat broke by the end of 1888. The day after his return to Bisbee, he started work as a trammer at the Copper Queen at \$3 for an 8-hour day. In his spare time, he located a nearby clay deposit and made adobe bricks. This led to a profitable sideline. He expanded the business and hired local help, thus starting his business ventures. By 1892, Shattuck was able to quit his job at the mine and devote full time to his business ventures. These included a lumber yard, a beer franchise, a bar, mines around Bisbee as well as a Mexican venture, and a bank. The Bisbee mines were high grade and successful. Ultimately, the Shattuck mine merged in 1925 with the Denn mine, in which Shattuck also had an interest, to form the Shattuck Denn Mining Co. Phelps Dodge Corporation purchased the Shattuck Mine in 1947. Between 1906 and 1947 the Shattuck Mine produced more than 3 million tons of copper and lead-zinc ore along with some manganese oxide.

### Albert J. (Al) Perry (1930 - 2013) Exploration Geologist 2020 Inductee from Mining's Past



Albert J. (Al) Perry was born in 1930 in White Sulphur Springs, West Virginia. He served in the United States Marine Corps and attended Washington and Lee University, graduating with a Bachelor of Science degree in Geology. With his wife Mary, he went to the University of Colorado, where he earned a Master of Science in Geology. The 1950's uranium boom led him to become an exploration geologist with Union Carbide, where he branched out to explore for other metals, including silver and gold. From this experience he formed Perry, Knox and Kaufman (PKK), a consulting and contract exploration company, that determined that lower grade silver mineralization present in the Silver City district in Idaho and at Candelaria, Nevada, could be successfully mined using conventional open pit methods. After the dissolution of PKK in 1979, the developing worldwide exploration boom for gold started him on a path that focused on grass-roots exploration extending from the western U.S. to Australia, Fiji, and Africa. In Ghana and Eritrea he achieved his greatest exploration success, single handedly discovering the Enkron Hill deposit in Ghana, and the Emba Dehro, Adi Nefas, Gupo, and Debarwa deposits in Eritrea. Together, these deposits have been developed into mines containing more than 2 million ounces of gold. While working in Africa, Al developed a passion for supporting the less privileged people he encountered by funding university degrees for two Ghanaian students, and helping to support a church-run boarding school in Ghana. He considered these to be among his greatest accomplishments.

# HALL OF FAME COMMITTEE MEETING

Date: Wednesday, October 14, 2020

Time: 3:30 p.m. — 4:30 p.m. HOF Committee Meeting

ZOOM by Invitation

RSVP: [admin@miningfoundationsw.org](mailto:admin@miningfoundationsw.org) or 520-577-7519

*WEAR A MASK PLEASE  
WHEN OUT IN PUBLIC  
PLACES!*

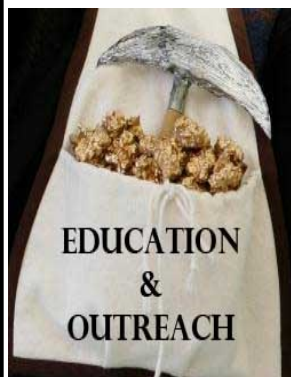




## ***December 5, 2020 Hall of Fame Awards Ceremony Information***

### **SPONSORSHIP OPPORTUNITY IS STILL AVAILABLE**

Sponsorships are offered at 4 levels: Diamond (\$10,000), Platinum (\$5,000), Gold (\$2,500) and Silver (\$1,000). All sponsors are recognized on the Foundation's website, press releases, program and during the ceremony.



Sponsorships fund an Education Outreach Coordinator position managed through the Lowell Institute for Mineral Resources at The University of Arizona (U of A). Chris Earnest has served as the Educational Outreach Coordinator since September 2019 where he creates educational materials, demonstrations and activities to help stimulate interest in and understanding of mineral resources and the mining industry for students and the general public.

### **HOW TO PARTICIPATE**

**To view the Awards Ceremony on Saturday, December 5 at 7 PM, please RSVP to [admin@miningfoundationsw.org](mailto:admin@miningfoundationsw.org) and a link will be sent to you.**

**For additional information, please go to: [www.miningfoundationsw.org](http://www.miningfoundationsw.org)**