



MINING FOUNDATION OF THE SOUTHWEST
PO Box 42317 , TUCSON, AZ 85733
520-577-7519 (office), 520-577-7073 (fax)

MAY 2019
www.miningfoundationsw.org
admin@miningfoundationsw.org

CONCENTRATES

2019 American Mining Hall of Fame Slate of Honorees To be Honored on December 7, 2019



Main Inductee:

Darren M. Pylot
President and Chief Executive Officer
Capstone Mining Corp.



Medal of Merit:

Victoria Peacey
Senior Manager Permitting and Approvals
Resolution Copper



Vicki Seppala
General Manager of the Climax Mine
Freeport-McMoRan

Medal of Merit Under age 40:



William Sircy
General Manager Processing, Cerro Verde
Freeport-McMoRan



Cody Sutherlin
General Manager of Surface Mining, Nevada
Newmont Mining Corporation

Industry Partnership:



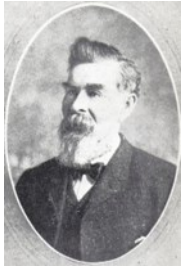
Golder is 100% employee owned and started in 1960 in Canada. Golder now has over 165 offices in six continents, offering expanded services in mining, energy, environmental, design, and ground engineering.



Inductees from Mining's Past:



Enos A. Wall (1839 – 1920) was the original owner of claims that became the nucleus of Utah Copper. Endured derision for having a deposit of “wall rock”, but through his diligent work and sampling at Bingham Canyon, concluded that there was an immense tonnage of disseminated copper universally distributed.



Charles Senter (1845 – 1924) was an Indian Scout and fighter under General Crook in "Custer's Avengers" and on August 17, 1879 on Barlett Mountain in the Rocky Mountains of Colorado, during "The Leadville Boom" he claimed a large grayish colored outcropping of mineral. He had no idea what the mineral was, but was convinced that it must be worth something. It wasn't until 1895 that he identified the mineral as molybdenite (molybdenum sulfide). At the time there was virtually no market or use for the metal. Years later steelmakers found a use for molybdenum as an alloy in producing hard steel. Shipments began in 1915. The claim was called Climax Molybdenum Mine and began full production in 1918.



Juan Jose Gradello was a Tohono O'odham man who discovered the Vekol Silver mine in the desert ranges west and south of Casa Grande in 1879. The Vekol claim was formally registered in 1880 by Juan Jose and two Anglo partners, Col. Peter R. Brady and Capt. John D. Walker. Walker and Brady soon purchased the interest of Juan Jose and developed the property during the early 1880s.



Sarah Herring Sorin (1861 – 1914) was Arizona's first woman attorney and the first woman to try a case in front of the United States Supreme Court unassisted by a male attorney. Sorin practiced law with her father William Herring in the firm "Herring & Sorin" initially in Tombstone, Arizona, and later in Tucson. After her father's death, Sorin moved to Globe, Arizona, where she became the attorney for the Old Dominion Copper Company and United Globe Mines. Sarah Sorin is a member of the Arizona Women's Hall of Fame. She is also included in Stanford Law School's Women's Legal History Biography Project.

JW MARRIOTT TUCSON STAR PASS



Plan to join the Mining Weekend (12/7-12/9/18) cohosted by MFSW, SME Arizona Conference, UA SME Students and AMI-GOS. Attendees are extended a special room rate of \$138 + tax per night, discounted \$85 golf rate and a 20% spa only discount. Hotel reservations can be made on line at <https://book.passkey.com/go/SMEArizona2019> (preferred) or by calling 1-877-622-3140 (ask for “SME Arizona Conference / MFSW / Summit 2019”). The contracted cutoff date for reservations at the group rate is Friday, Nov. 8th.

PRESIDENT'S CORNER

MESSAGE FROM INCOMING PRESIDENT, CHRIS WILSON



April has long been a time of new beginnings and mostly welcome changes. From the weather warming up to the flowers beginning to bloom (and the allergies that inevitably follow), May now brings with it the excitement of things to come.

I would like to take a moment of your time to say how honored I am to serve as this year's President of the Mining Foundation of the Southwest. We have already selected this year's honorees who have made outstanding contributions to the field of mining. Our Hall of Fame committee is also working hard to make this year's event the best yet.

I also want to thank all those who attended the 36th Annual American Mining Hall of Fame Banquet & Fundraiser and the people whose hard work made it such a success. More than 600 tickets were purchased, and those in attendance had the great privilege of watching Red Conger's induction into the American Mining Hall of Fame. It is through the contributions of many that we are able to put on programs like this. Serving as the Hall of Fame chairman for 2018-2019 was an experience I won't soon forget, but I am pleased to pass on the position to Rebecca Martinez, our newest chairman, who I know will do an outstanding job.

As we work our way through 2019, I hope that you all are as excited as I am about what is to come. My hope is that we can take the momentum of last year and turn it into even more opportunities for youth, greater knowledge of the mining industry within the public, and an ever-growing appreciation for everything this field and its people have to offer.

BOARD OF GOVERNORS MEETING

Date: Thursday, May 09, 2019

Time: 4:00 p.m. — 6:00 p.m.

Place: ASARCO Training Center, 1150 N. 7th Ave., Tucson, AZ

RSVP: admin@miningfoundationsw.org or 520-577-7519

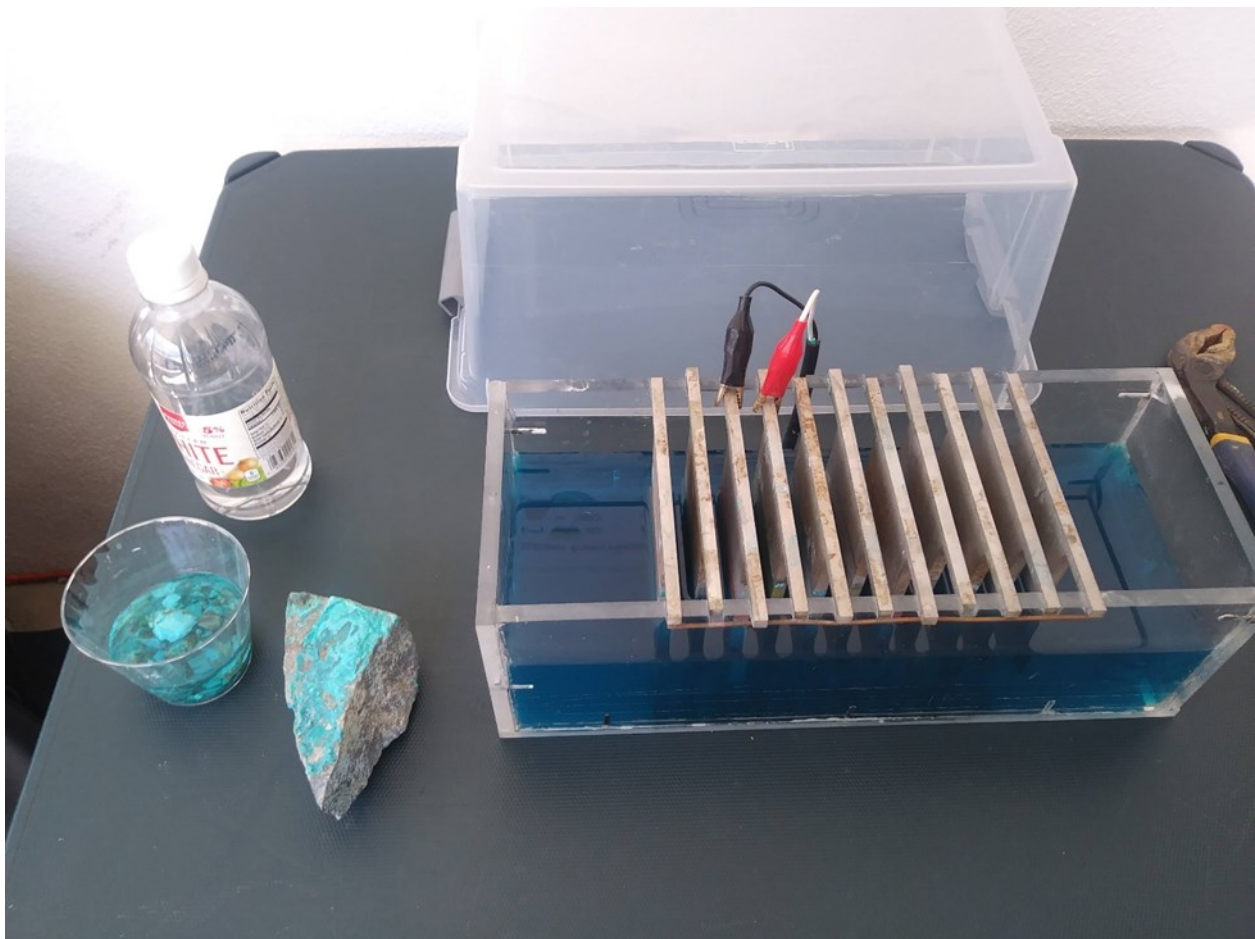


LOWELL INSTITUTE FOR MINERAL RESOURCES



OUTREACH CORNER BY Molly Radwany

Many of the events that the outreach program has been able to take part in over the past few months have been events I have described as “STEM events.” It may be worth describing this in more detail so you can have an idea of some of the things we do at the Lowell Institute.



Model electrowinning display at the THA STEM Festival (model was designed by Gail Heath and students from the Mining Engineering Department for outreach and education purposes).

Outreach Corner Cont.

STEM (Science, Technology, Engineering and Math) events are typically put on by a school or community group to provide a venue for exposing students to STEM professions or applications of STEM that are not a normal part of their curriculum. Organizations invited to participate may be from universities, companies or nonprofits. The events usually last most of a day or several days and are accompanied by other special activities to boost student excitement and engagement. These events generally come in one of the following three styles:

1. Festival-style/tabling events: students/visitors are free to mingle with volunteers at tables where an activity or demonstration is on hand to show some aspect of the field.
2. Short lectures: These are career day or science day talks that are usually 20-30 minutes in length and allow you to describe your field of expertise to students in a classroom setting. Students typically cycle through rooms around the school to hear from a number of different experts, and giving us a chance to speak to 5 or so groups.
3. Workshops: These are usually longer events (30 minutes – 2 hours) in which the focus is a more involved hands-on activity that highlights some aspects of the field. These may be in a classroom or at a conference venue depending on the event. Groups of students cycle through, so we may have 4 or 5 groups during an event.

While not all events fit neatly into one of these categories, since January we have reached over 4,000 people through 15 tabling events, 3 lecture-style events, 2 workshops and 4 tours at San Xavier Mine. Teachers and sometimes parents are present at these events, allowing us to further our network of connections. We have three more workshops scheduled in the month of May.

Below are the outreach events since the last newsletter:

Event (location)	Type of event (tabling, lecture, workshop, tour)	Number of interactions (age of most participants)
Tour of San Xavier Mine (Group from Rio Rico)	Lecture, Tour	17 (high school seniors)
Tour of San Xavier Mine (Group from Pima Community College)	Tour	17 (college-aged)
THA STEM Festival (Tucson)	Tabling event	120 (elementary – middle school aged)
Boxer Expo (Vail)	Tabling event	20 (middle – high school aged)
UA Men's Baseball STEM Night (Tucson)	Tabling event	20 (elementary – middle school aged)
Math and Science Experience at Cochise College (Sierra Vista)	Workshop	120 (4 th – 6 th graders)

Outreach Corner Cont.



Students from an engineering class at Rio Rico High School were given a tour of the San Xavier Mine as well as talks from myself and some of the Mining Engineering students.



For the last 10 years the Mining Foundation of the Southwest has fully funded an outreach position at The Lowell Institute for Mineral Resources (IMR) at the University of Arizona with the purpose of educating students and the public about mineral resources and the mineral extraction and processing industries and their importance to our economy, our lifestyle and our quality of life .

HALL OF FAME COMMITTEE MEETING

Date: Tuesday, May 14, 2019

Time: 3:30 p.m. — 4:30 p.m.

Place: ASARCO Training Center, 1150 N. 7th Ave., Tucson, AZ

RSVP: admin@miningfoundationsw.org or 520-577-7519

MEMBERS' CORNER

We welcome new members:

Greg Lucero, VP Corporate Affairs, South 32

Lucero has been in the Mining industry since 2011 when he joined Arizona Mining (formerly known as Wildcat Silver) as the Vice President of Community and Government Affairs. A skilled communicator and well respected community activist in Southern Arizona, Greg previously served as Santa Cruz County Manager and is presently a member of the Nogales City Council and School Board. He has a BA in Political Science from the University of Arizona.

Roberto Jimenez, Cluster Capacitacion

Jimenez has been in the mining industry in Chile for over 20 years and is presently the General Manager at Cluster Capacitacion



New Member Recruitment



Thank you all for your support of the MFSW. Help us get bigger and stronger and healthier. Go out and find a new member!