



MINING FOUNDATION OF THE SOUTHWEST

PO Box 42317 , TUCSON, AZ 85733

520-577-7519 (office), 520-577-7073 (fax)

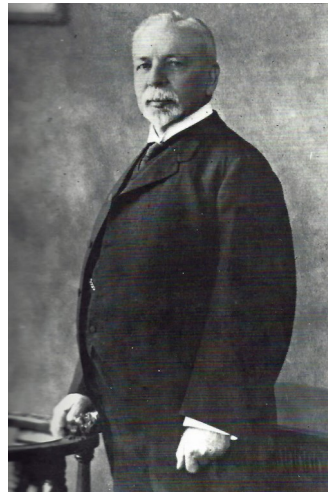
October, 2017

[www.miningfoundationsw.org](http://www.miningfoundationsw.org)

[admin@miningfoundationsw.org](mailto:admin@miningfoundationsw.org)

# CONCENTRATES

## 12/2 Awards Banquet to Induct the 2017 Mining's Past Honorees



**HENRY LESINSKI**

**(1836 -1924)**

**Mine Infrastructure Developer**

Henry Lesinski was born in Poland. Following his father's death, he was sent to England at age 14 to learn stone and wood carving. He saved enough money to go to Australia where he worked on road crews and in the gold fields. With \$600 in savings, he went to America to pan for gold in California. After learning his uncle was in New Mexico, he joined him, formed a partnership and became a successful merchant around Las Cruces buying and selling local grains to the government.

In 1872, he was approached by Robert Metcalf for financial backing to develop claims near Morenci, AZ. Lesinski ultimately bought the controlling interest in Metcalf's holdings and formed the San Francisco Mining Company. This venture had to overcome problems from hostile Apaches, smelting complications, fuel availability, transportation logistics and marketing. At times, profits from the store in Las Cruces were all that kept the operation afloat.

Transportation was solved by constructing and operating Arizona's first railroad, a 20 inch narrow gage track. Fuel for both smelting and the railroad was charcoal made from mesquite and scrub oak. Lesinski also hired Mexicans experienced in smelting to build and operate a smelter. Later, a larger smelter was built, operations expanded and problems minimized.

Six mines were established by Lesinski's firm, employing 600 men. In 1882, a British firm bought Lesinski's operations for \$1,200,000 which became known as the Arizona Copper Company, Ltd.

Lesinski was also an early developer of the City of El Paso establishing a general merchandising business. He died in New York City.



## **FRANK M. MURPHY**

**(1854 - 1917)**

### **Railroad Entrepreneur**

Murphy was born in Maine, grew up in Wisconsin and went to California in 1877, finding employment as a stage driver. He went to Prescott the following year and worked in a haberdashery. Murphy developed an interest in minerals and in 1883 he and Douglas Gray, a mining engineer, took Yavapai ores to exhibits in Denver, Chicago and to the World's Fair in New Orleans in 1884.

Murphy met mine developers "Diamond" Joe Reynolds and Senator William Andrew Clark and acted as Clark's unknown representative in the purchase of the United Verde mine, outbidding Phelps Dodge. The initial investment of \$250,000 realized a return of \$100 million and solidified Murphy's reputation as a mine developer and venture capitalist.

Murphy's next move was to form a partnership with Reynolds in the Congress Gold Mine. When Reynolds died, Murphy bought Reynolds' share. Murphy soon realized that he had to build the Sante Fe, Prescott and Phoenix Railroad (SFP&P) to insure the economic success of the mine. By 1891, Congress was Arizona's largest gold mine, producing nearly \$8 million in gold.

Murphy then built the Prescott and Eastern Railroad, which served mines in the northern Bradshaw Mountains including the Poland Mining Company; numerous other mines from Walker to Crown King; and Arizona Smelting Company's smelter at Humboldt, all of which had Murphy interests.

Other ventures included the Development Corporation of America made-up of mines around Tombstone. Non-mining enterprises included the purchase of the Arizona Republican newspaper and Castle Hot Springs hotel. Murphy was president of the Prescott National Bank until his death.



## **M. LEE ALLISON**

**(1948 - 2016)**

### **Visionary Geologist & Dynamic Leader**

Dr. M. Lee Allison received his education at the University of California, Riverside (B.A.), San Diego State University (M.S.), and the University of Massachusetts (Ph.D.). He worked in the oil industry for 15 years before transitioning to public service.

Allison was a dynamic leader of the Arizona, Kansas, and Utah Geological Surveys and made transparency and public service a cornerstone of these agencies. He helped develop the AZGS Earth Fissure program, which ensures public access to information on the location and extent of earth fissures and land subsidence, and established the AZGS online Document Repository, which offers the public free access to more than 100 years of AZGS publications on the geology, geologic hazards, exploration potential, mine operations, and mining districts of Arizona. Allison encouraged his staff to develop projects for the public good, e.g.: Natural Hazards in Arizona viewer, Arizona Experience website, and the Great Arizona ShakeOut. He founded AZ Mining Review, the first mining e-video magazine in the U.S.

Allison was a true visionary, dedicated to expanding public access to the geosciences and forging cooperation among diverse groups. He marshaled the energy and resources of 48 state surveys to build the National Geothermal Data System and served on National Science Foundation's Advisory Committee for Cyberinfrastructure, and the North American OneGeology Board of Directors. His collaborative spirit and push to get reports, maps, and data online had assisted the mining and mineral development industry at all stages from grassroots exploration and project evaluations to environmental permitting, through to support for operations and mine closure.



## **KATHY G. WHITMAN**

**(1959 - 2012)**

### **Environmental Permitting Specialist**

Kathy G. Whitman was born in Tulsa, OK and raised in Boulder, CO. After receiving her degree in Range Ecology and Watershed Science from the University of Wyoming, she joined Bridger Coal Company in Rock Springs, WY focusing on reclamation and then obtained a second undergraduate degree in Integrated Studies from Weber State in Utah.

In 1989, Whitman relocated to Globe, AZ to work for Magma Copper Company at the Pinto Valley Mine in charge of environmental compliance and permitting and later joined Carlota Copper Company spear-heading the permitting of the Carlota Mine with the United States Forest Service.

As Whitman's reputation grew, she founded Whitman & Company in 1993. She became the "go to person" for permitting offering highly specialized consulting services and expertise to mine operations throughout the southwest. Notable successes included the substantial leach operations expansion on both Forest Service and BLM lands at the then Cyprus Miami facility and the exploration campaign and initial environmental studies for the Rio Tinto/BHP Resolution Project near Superior.

In 2001, Whitman & Company merged with WestLand Resources of Tucson with Whitman bringing her renowned mining related environmental compliance expertise to the joint venture. She also continued her consulting services and generously shared her knowledge with a new generation of environmental and mining professionals.

At her passing in 2012, Whitman was not only known as a pioneer in environmental compliance but was also a respected non-fiction author recognized by the prestigious Mayborn Literary and Non-Fiction Conference.

## Outreach Corner by Pam Wilkinson

### MFSW Outreach Coordinator Activities: July-September 2017

It was a busy summer and the school year has started well. July found me at the National Boy Scout Jamboree in West Virginia, where I assisted at least 250 scouts in earning the Mining in Society Merit Badge. The booth was organized by the Society for Mining, Metallurgy and Exploration. Please take a look at the September issue of Mining Engineering, the Minerals Education Coalition portion. There you will find an article about the jamboree, photo of me that credits the Mining Foundation of the Southwest for my presence at the event! Thank you so much for this opportunity. It is very rewarding to help scouts understand the importance of mining. July also included my leading a Mining in Society merit badge workshop at Morenci, where 49 scouts earned the badge and the 27 adults accompanying them learned about mining in Arizona. And a day spent with girls from the Boys and Girls club of Phoenix, where 12 girls and 6 adults learned about mining and the importance of copper in their lives.

The school year has started well, with over 900 students in classroom settings, see chart below. I continue to update my materials and add to my presentations. Having two interns provided to me by the Tucson section of SME has been fabulous. They are doing research and editing and adding to the materials I can offer. They are also doing a great job at presenting to college students, at the local community colleges and on campus.

School	City	Students	Adults	Date	days	classes
Ironwood Ridge HS	Oro Valley	140	1	8/25/2017	1	6
New River Elem.	New River	39	2	9/1/2017	1	2
Sonoran Foothills School	Phoenix	85	1	9/14/2017	1	4
Bogle Jr Hi	Chandler	108	2	9/18/2017	1	4
Snowflake HS	Snowflake	159	1	9/20/2017	1	6
Blueridge Jr Hi	Pinetop	109	1	9/21/2017	1	4
Scottsdale Prep Acad.	Scottsdale	145	1	9/22/2017	1	7
Fairfax HS	Laveen	93	1	9/25/2017	1	4
Sonoran Science Acad.	Tucson	60	2	9/27/2017	1	4
<b>Total</b>		<b>938</b>	<b>12</b>		<b>9</b>	<b>41</b>

One of the goals for this year is to get all of my activities up on the website. This will provide teachers who would like to do the activities on their own that opportunity. And when I cannot fit a school in my schedule I can refer them to the website and they can then access the materials.

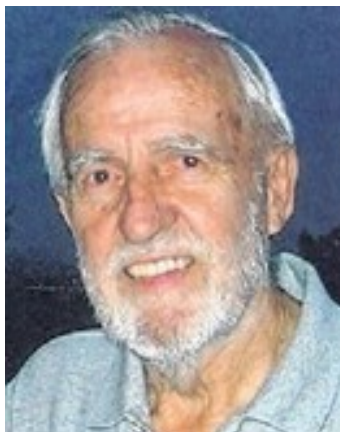
Once again I would like to let you all know how much I appreciate the opportunity to spread the word about modern mining to the students and adults of the State of Arizona and through my work with SME/MEC which is also going national and international. I am looking forward to another great year.



National Boy Scout Jamboree 2017

## IN MEMORIAM

**Paul Arthur Hodges 11/4/1926- 8/27/2017**



Paul Arthur Hodges was the 2008 Medal of Merit recipient. In his career, he had served in all capacities from laborer to locomotive driver to General Manager to Director in underground and open pit mines in North America, South America and Africa. Even though he oversaw the Rossing Uranium project in southern Africa, the Letseng-la Tarel diamond project in the Solomon Islands, the Lornex project in Canada, the Cerro Colorado project in Panama, the Udoken project in the USSR and the Coed-y-Brenin project in Wales, he was best known for designing and developing open pit mines. In later life, he volunteered with Habitat for Humanity and The Flying Samaritans.

### December 2, 2017 Hall of Fame Awards Banquet Information

#### SPONSORSHIP OPPORTUNITY

Sponsorships are offered at 4 levels: Diamond, Platinum, Gold & Silver . All sponsors are recognized on the Foundation's website, press releases, banquet program and during the banquet ceremony.

#### TICKET SALES

Voting, Silver and Gold members in good standing are extended 2 member pricing banquet tickets.

#### HOTEL RESERVATION

Please reference SME/MFSW/Summit when booking reservation by phone . The reservations link is listed below:

<https://aws.passkey.com/go/SME2017>

**For additional information, please refer to the attached 2017 flyer.**

