

Thirty-Seventh Annual
American Mining Hall of Fame



**Awards
Presentation**
BANQUET & FUNDRAISER

Saturday, December 7th, 2019
JW Marriott Starr Pass Resort & Spa, Tucson, Arizona

Program

6:00 p.m.	RECEPTION
7:00 p.m.	BANQUET
8:00 p.m.	CEREMONY

Welcoming Remarks: **CHRIS WILSON**, PRESIDENT, MFSW

Introduction of Honorees
and Honored Guests: **CHRIS WILSON**

Awards Opening Remarks: **REBECCA MARTINEZ**, VICE PRESIDENT, MFSW

Presentation of Inductees
From Mining’s Past

BY REBECCA MARTINEZ: **ENOS ANDREW WALL** (1839 – 1920)
ACCEPTED BY ERIC MAYOR

CHARLES J. SENTER (1845 – 1924)

SARAH HERRING SORIN (1861 – 1914)
ACCEPTED BY ALLEN COONEY

Presentation of Medal of Merit
BY REBECCA MARTINEZ: **VICTORIA PEACEY AND VICKI SEPPALA**

Presentation of Medal of Merit
Under age 40 BY REBECCA MARTINEZ: **CODY SUTHERLIN AND WILLIAM SIRCY**

Presentation of Industry Partnership
Award BY REBECCA MARTINEZ: **GOLDER**
ACCEPTED BY DAVID KIDD,
PRINCIPAL, GEOTECHNICAL PRACTICE LEADER

Grand Door Prize: **REBECCA MARTINEZ**

Presentation of Inductee
BY CHRIS WILSON: **DARREN M. PYLOT**

Featured Address: **DARREN M. PYLOT**

Adjournment: **CHRIS WILSON**



Sponsors

PLATINUM

Epiroc	Komatsu
FL Smidth	M3 Engineering
Freeport-McMoRan Inc.	

GOLD

Ames Construction	Independent Mining Consultants
Arizona Mining Association	Meridian Engineering Company
ASARCO - AMC, Grupo Mexico	Modular Mining
Boart Longyear Company	Newmont Mining
Capstone Mining Corp.	Resolution Copper (Rio Tinto)
Caterpillar	Ruen Drilling
Doosan Bobcat	Southwest Energy
Eclipse Mining Technologies	SRK Consulting
Empire Southwest	Westland Resources, Inc.
Hudbay Minerals Inc.	

SILVER

Apache Nitrogen Products Inc.	Hexagon Mining
Ausenco	IEC Supply
Borderland Construction	McGuire Woods LLP
CAID	Origin Mining Co., LLC
CalPortland	Pioneer Equipment, Inc.
Carlota Copper Company (KGHM)	Quarles & Brady
Cascade Drilling	Skyline Assayers & Laboratories
Cementation	South32
CTI	Sundt Construction
DeConcini McDonald Yetwin & Lacy, P.C	Tsiolis Law
Fennemore Craig P.C.	Valley Forge and Bolt Company
Golden Vertex	Yellow Jacket Drilling Services
Golder	

OTHERS

Kathy Arnold	Southern Arizona Business Coalition
National Mining Hall of Fame & Museum	

Mining Foundation of the Southwest

The Mining Foundation of the Southwest was incorporated on May 3, 1993 with the merger of the Mining Club of the Southwest and the Mining Club of the Southwest Foundation. The Mining Club was spawned in late 1970 by a group of Tucson based engineers, metallurgists and geologists; opened its doors officially on February 1, 1971; and was incorporated by the State of Arizona on February 22, 1971.

The Club's Foundation was formed on June 18, 1982 to allow for tax deductible contributions to be used for charitable and educational purposes. The first American Mining Hall of Fame Awards was held on December 3, 1983.

Funds generated through the annual banquet are earmarked to support our mission. The MFSW partners with the Lowell Institute for Mineral Resources at the University of Arizona and is a prominent financial funding source for the IMR Outreach Program.

At its annual fundraiser, the American Mining Hall of Fame honors achievement of industry leaders. Including the 2019 inductees, 244 mining luminaries and organizations have been inducted and some of the commemorative plaques of past honorees are on display at the Arizona Historical Society Museum at 949 E. 2nd Street in Tucson.

The purpose of the Foundation is to promote the value of the mining industry, honor its past and ensure its future.

Education is a major hallmark of the foundation, providing students, teachers, parents and others a comprehensive understanding of the fundamentals of mining and the uses of minerals, both metallic and industrial, that are essential to the world economy.



Mining Foundation of the Southwest

P.O. Box 42317
Tucson, AZ 85733

THOMAS L. ALDRICH
EXECUTIVE DIRECTOR
Phone: (520) 577-7519
Fax: (520) 577-7073

email: admin@miningfoundationsw.org
www.miningfoundationsw.org

2019 Hall of Fame Committee

Rebecca Martinez - Chair

Robin Barnes
Mark Baker
Amanda Best
Jodi Hope Banta
Avi Buckles
Lawrence G. Dykers
Donald F. Earnest

John Fenn
William E. Hawes
Corolla (Cori) Hoag
Steve Holmes
Matthew D. Lengerich
Brian Njenga
Brad Ross

Thomas Scartaccini
Andrew Soderman
David Travis
Gene Waken
William H. Wilkinson
Chris Wilson
Rodney Woodcock

Darren M. Pylot

PRESIDENT AND CHIEF EXECUTIVE OFFICER | CAPSTONE MINING CORP.



Darren M. Pylot is a mining entrepreneur and businessperson who founded Capstone Mining Corp. in 2002 and is its President and Chief Executive Office and a Director of the company

Under his leadership, Capstone has grown from an exploration company, into a single asset company operating the Cozamin Mine, and then a leading intermediate copper producer, developer and exploration company by merging with Sherwood Copper (Minto and Kutcho), acquiring Far West Mining (Santo Domingo), developing the strategic partnership with Korea Resources Corporation and acquiring the Pinto Valley Mine from BHP Billiton Ltd. Pylot has led the transformation of what was a small exploration company in 2002 into a billion-dollar copper producer with mines and projects in the United States, Mexico and Chile, and a portfolio of exploration properties.

Pylot was born in Kelowna and raised in Revelstoke, British Columbia, Canada. In the mid-1980s, Pylot moved to Vancouver, where he attended Simon Fraser University. While there, he studied business and soon went on to work for PwC, a global network of firms delivering assurance, tax and consulting services. Shortly thereafter, he joined a local mining company as controller.

In the mid-1990s Pylot ventured into South America in search of precious metals, but his efforts turned up little and investor appetite for metals waned. In the early 2000s he re-formed his company and took it into Mexico in search of gold and silver. At the time the company was called Capstone Gold and had optioned a past-producing silver-lead-zinc mine with the intention to restart it. But exploratory drilling found abundant copper along with the silver, lead and zinc, so the company was able to refurbish the existing infrastructure and rapidly put Cozamin back into production for \$30 million, with copper as the primary product.

In 2008, Pylot led a US\$450M merger between his company and Sherwood Copper, bringing Sherwood's high-grade copper-gold Minto mine in Yukon, Canada into the Capstone fold. In 2011, Capstone purchased 70% of the Santo Domingo Project, a large-scale iron oxide-copper-gold development project in Chile. It is jointly owned with 30% holder, Korea Resources Corporation (KORES), the Korean state-owned resource acquisition enterprise. In 2013, Capstone purchased the Pinto Valley Operation for US\$650M. The Pinto Valley mine is a 54,800 tonne per day copper mine, located in the Globe-Miami mining district in Arizona.

In 2017 and 2019, Capstone sold its Kutcho project and Minto mine, to focus resources on opportunities that will have a more meaningful impact on the long-term growth of the company as it continues to advance.

Juan José Gradillo (1830 - UNCERTAIN)

O'DHAM PROSPECTOR



In the late nineteenth century, O'dham traditional knowledge of mineral resources led to the discovery of one of the richest silver lodes in Arizona Territory, the Vekol mine. **Juan José Gradillo** was the Tohono O'dham man who discovered the silver mine in 1879 in the Vekol Mountains about 30 miles southwest of Casa Grande, on land that is now part of the Tohono O'dham Nation.

The circumstances of the discovery are uncertain, but Gradillo alone seems to have discovered the lode that came to be known as Vekol, Tohono O'dham for "grandmother." Juan José shared the news with former Army captain and federal Indian agent John D. Walker. Gradillo, Walker, and Peter R. Brady, one of Arizona's leading pioneers, soon staked out the rich silver cropping, and in February 1880 the three men together filed a claim on it.

It was one of the few times in Arizona history where Native Americans and Anglo-Americans jointly filed a mining claim. Later in 1880, Juan José sold his interest in the mine to his two partners and settled down on his homestead near Florence, not far from the farm of Captain Walker. Within a year, the Vekol had become one of the largest producers of silver in Arizona Territory, and a substantial town had grown up around the mine. The mine remained a top silver producer through the 1880s and was worked to lesser degrees until 1894.

Because of the strong prejudice of most nineteenth-century Anglo-Americans against the Tohono O'dham, Gradillo was given little credit for his discovery of the Vekol, but his contributions as a pioneer miner of Arizona are worthy of remembering and honoring.

Enos A. Wall (1839-1920)

MINE OPERATOR AND ENTREPRENEUR



Enos Wall lived in Indiana until he was twenty. He then moved west, mining, freighting and selling goods in Colorado, Montana and Utah. In 1868, he moved to southern Utah, to the newly discovered mines at Silver Reef. Here he discovered and operated the Kinner mine and also met and married his wife, Mary Mayer.

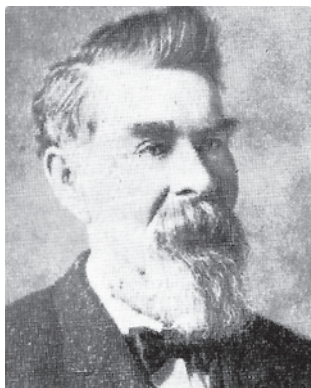
After a financial setback in Silver Reef, the Walls moved to Idaho in 1882 where he operated a mine, and was elected to the legislature. Three years later, they moved back to Utah where Enos successfully owned and operated mines at Mercur and Ophir.

Moving north in the same mountain range, he developed and sold the Yampa mine at Bingham Canyon. He noticed widespread low grade copper mineralization elsewhere at Bingham and sampled several abandoned adits, which indicated a large tonnage of low grade copper. He located about 10 claims and maintained the assessment, despite the derision of having only "Wall Rock" for ore.

The profits derived from the sale of his other mines were not enough to develop the copper claims, so he optioned them to Captain Joseph DeLamar (a successful mine operator), who ultimately had two engineers in his employ conduct an examination.

Daniel Jackling, one of the engineers, was so convinced of the value of the property that he devoted the next four years getting investors to develop the great Bingham Canyon mine. Enos Wall retained a 20% interest, but has largely been forgotten as the man who discovered Utah Copper and inherently realized its value.

Charles J. Senter (1845-1924)
DISCOVERER OF CLIMAX MOLYBDENUM DEPOSIT



Charles J Senter served in the Union Navy during the Civil War. After the war, he traveled west where he joined the army, helping to open the expansive west to early settlers. At the end of the South Dakota campaign, he mustered out with the rank of sergeant and first worked freighting supplies.

Then, after marrying a Plains Indian woman, Senter made a living by placer mining in the mountains along the Continental Divide in Colorado. In his quest for the source of the gold in the creeks, he came upon a mountain covered with small veinlets of mineral resembling graphite. He finally found out from assayers and from the Colorado School of Mines that the mineral was molybdenite (a sulfide of molybdenum).

He had only a few assays run - the cost being \$5, which was ten times what a gold assay cost. He was impressed by the enormity of the deposit - virtually the entire mountain had the tiny veinlets. He figured that such quantity would be worth something. He staked several claims, which were formally recorded in 1893.

The following years saw Senter's hopes rise and fall, with an uncertain outlook for molybdenum. Finally, with the outbreak of the World War, the German discovery of the alloying properties of molybdenum and the discovery of the flotation process for upgrading molybdenite, Senter's discovery finally had value.

Sarah Herring Sorin (1845-1924)
MINING ATTORNEY



Sarah Herring Sorin was Arizona's first woman lawyer and the first woman to argue a case at the United States Supreme Court unassisted by a male attorney. She won the case that involved the disputed ownership of two mines. She was born in New York City on January 15, 1861, to William and Mary Inslee Herring, the eldest of five children.

Sarah taught grammar school after graduating from Normal College. In 1881 she joined her family in Tombstone, Arizona Territory. Sarah taught school and served as principal and school librarian.

In 1891, Sarah quit teaching to read law in her father's law office. She passed a rigorous oral examination in open court and was admitted to practice in the First Judicial District Court in 1892. Sarah, also, attended New York University's School of Law, one of the few law schools that accepted women students. She graduated with an L.L.B. in 1894. She returned to Tombstone to specialize in mining law.

In 1896 the Herring family left Tombstone and moved to Tucson. On July 21, 1898, Sarah married Thomas Robertson Sorin, a mining enthusiast and rancher. After her father's death in 1912, Sarah moved to Globe and became counsel for Old Dominion Copper Mining & Smelting Company.

On April 30, 1914, Sarah died from pneumonia at the age of 53. Each year, the Arizona Women Lawyers Association bestows the Sarah Herring Sorin Award to a member who supports the advancement of women in the legal profession. Sarah was inducted into the Arizona Women's Hall of Fame and Women's Plaza of Honor at the University of Arizona. A faculty chair has been inaugurated at New York University School of Law in her name.

Victoria Peacey

SENIOR MANAGER PERMITTING AND APPROVALS, RESOLUTION COPPER



Born in Montreal, Canada, **Victoria Peacey** comes from a mining family - her father, sister, brother-in-law and her husband are all miners. She attended the University of Western Ontario where she received a Bachelor of Science Degree in Applied Geoscience and a Master of Science Degree in Civil & Environmental Engineering.

Peacey has been with Resolution Copper since 2010 where she is presently the Senior Manager Permitting and Approvals and manages all federal, state and local agency approvals, agreements and permits and makes sure that the company is sensitive to the environment and cultural heritage during the planning process and that the mine will be operated in a way that preserves and protects the natural surroundings.

Peacey joined Rio Tinto in 2002 as a Senior Environmental Engineer at Kennecott's Bingham Canyon Mine in Utah where she successfully designed and implemented a strategy to obtain multiple state permits for a major expansion of the Bingham Canyon

Mine open pit, concentrator and tailings. This work included completion of all baseline data collection and impact assessments for groundwater, geochemistry, surface water and air as well as closure and reclamation.

In 2007 Peacey attended an intensive 4 week course at the London School of Business and Finance and participated in the Emerging Leaders Program.

She then moved to Marquette, Michigan in 2008 as Manager Environmental Affairs and Permitting for Rio Tinto's Kennecott Eagle Minerals where she developed and implemented a strategy to successfully obtain all Federal, State and County permits and approvals for a \$400M underground mine, concentrator and tailings facility. Production commenced in September 2014 ahead of schedule and on budget.

Peacey lives in Gold Canyon, Arizona with her husband and three children.

Peacey is on the Board of the American Exploration & Mining Association. She has been active with the Boyce Thomas Arboretum and has participated as a fundraiser for the Phoenix Indian Center.

VICKI SEPPALA

GENERAL MANAGER OF THE CLIMAX MINE | FREEPORT-MCMORAN

Nontraditional was a label used to describe **Vicki Seppala** when she returned to college. Returning to university after working in another industry was difficult but a path desired in her quest for a better life for herself and young son. It was just a Mine and Geological Engineering recruiting brochure on the science wall at Glendale Community College, but it caught her eye and Seppala soon found herself moving to Tucson with her fourth grade son and enrolling in the University of Arizona Geological Engineering program where she earned her Bachelor of Science Degree. She received scholastic scholarships each year and graduated with honors; she also was chosen the 1994 Outstanding Senior for the College of Engineering and Mines.

After graduation, although the industry was in a down cycle, Seppala was hired as a Geological Engineer with the Phelps Dodge Sierrita mine (now Freeport-McMoRan Inc.) Her leadership skills and enthusiasm of new challenges propelled Seppala into operational roles of increasing responsibility rapidly rising to Mine Operations & Maintenance Superintendent. In 2003 she was promoted to Mine Technology Manager responsible for investigating, developing, and introducing new/existing technology to Freeport's copper mines in North and South America.

In 2006 Seppala was promoted to Mine Manager at Freeport's Candelaria operation near Copiapo, Chile, becoming the first woman Mine Manager in Chile. The Mining Industry in Chile was rapidly changing with respect to women in nontraditional roles at that time, and Seppala became a part of that change. She helped introduce women haul truck drivers at the Candelaria operation.



After 4 ½ years in Chile, Seppala transferred back to the United States landing at Morenci as the Mine Manager, Fragmentation & Loading and subsequently the Mine Engineering Manager. In 2014 she was appointed Director, Corporate Safety responsible for planning, directing and leading the implementation of safety programs and policies for Freeport-McMoRan Americas.

In July 2018, Seppala was promoted to General Manager of the Climax Molybdenum Mine near Leadville, Colorado.

Born in Rogers, Arkansas, Seppala graduated high school in Glendale, Arizona. Away from work Seppala cherishes time spent with her son, Clay Seppala, his wife, LeAna, and their three daughters, Gwen, Charlotte and Rachel. Seppala thrives on adventure through work, travel and outdoor activities.

Seppala has spent her entire mining career at Freeport, is an active SME Member, sits on the Board of Directors of the Lowell Institute of Mineral Resources, and engages with many Women in Mining groups.

WILLIAM SIRCY

GENERAL MANAGER PROCESSING, CERRO VERDE | FREEPORT-MCMORAN

William Sircy earned a Bachelor's of Science Degree in Chemical Engineering from the University of Arizona. While in University, Sircy worked as a summer intern at Freeport-McMoRan's Hydrometallurgical facility in Morenci becoming the 5th generation of his family to work at Morenci. Upon graduation he was hired as a plant metallurgist in Bagdad in the SXEW facility where he helped commission the Concentrate Leach Demonstration Plant and worked with industry experts and helped in the development of the first stable commercial alternative anodes for the electrowinning of copper in a sulfate solution.

In 2005, Sircy moved back to Morenci as a Quality Analyst. Over the next 4 years he held a variety of positions and authored a paper, "Morenci Hydrometallurgical Process Improvements – Application of Six Sigma in Process Improvements" which he presented at the 2007 6th International Conference of Metallurgists CU. Sircy is also co-inventor on a FMI patent that describes a method to minimize solvent extraction interfacial shear and reduce organic entrainment.

Sircy transferred to Safford in 2009 as the SXEW Superintendent where he successfully led the design, installation and operation of a solvent extraction mix box capable of withstanding high internal forces. 2011 found Sircy back in Morenci as the Crushing and Conveying Manager. He oversaw the increase in primary crusher throughput from 119,000



tons per day to almost 200,000 and was instrumental in the design of the SW Mine for Leach (MFL) crushed leach stockpile which replaced the Stargo MFL system.

His next stop was in South America where he spent a little over 2 years in Chile at the El Abra operation as the Processing Manager and most recently in Peru at Cerro Verde. Sircy currently serves as the General Manager Processing.

Sircy speaks Spanish and is a member of SME.

Sircy and his wife Nicole have 3 children ages 4, 9, and 16. Outside of work Sircy is passionate about cars, golf, photography, and travel.

CODY SUTHERLIN

VICE PRESIDENT | US OPERATIONS | COEUR MINING, INC.

Cody Sutherlin holds a Bachelor of Science Degree in Mining Engineering from the Montana School of Mines and Engineering. After graduating, Sutherlin began his career with Rio Tinto Minerals in 2007 and held both technical and operational roles in the company's Talc and Borate product groups. In 2012, Sutherlin joined Rio Tinto's Kennecott Copper Operation in Salt Lake City, UT as a superintendent of mine planning.

On April 10, 2013, a towering wall of dirt and rocks gave way and crashed down the side of the Bingham Canyon Mine, which was described as one of the biggest non-volcanic landslides in North America's modern history. Sutherlin worked with the mine technical team to develop a plan to recover from this massive slide, and a few weeks after the slide he was promoted to manage the entire remediation effort.

This was a massive job that was one of the most difficult in the mining industry. Sutherlin quickly assembled a high-performance team that was successful in the remediation effort, and was able to do so faster than anyone thought possible. The speed at which the remediation work was accomplished meant that the mine could return to full operations sooner than the original schedule, which prevented large-scale impacts to the operation and its employees. And most importantly the remediation team did all of the work safely. At the time he was only 29 years old. The mine is now back to normal operations mining hundreds of millions of tons per year and producing nearly 300,000 tons of copper annually.

Subsequently, in late 2015 Sutherlin was named General Manager, Site Infrastructure and



Services, for Oyu Tolgoi LLC. Oyu Tolgoi is a copper-gold mine in the South Gobi region of Mongolia which is managed and operated by Rio Tinto. Sutherlin was responsible for logistics, electrical services, mechanical services, construction and engineering, heating, water utilities, and camp and site services.

In 2018, he went to Newmont Goldcorp in Elko, Nevada as General Manager of Surface Mining. Recently, he moved to Chicago as the Vice President of US Operations for Coeur Mining, Inc. Sutherlin continues to bring a strong commitment to safety and enjoys developing solutions to complex challenges.

Sutherlin grew up on his family's ranch in Stevensville, MT where he learned a solid work ethic and the ability to persevere. Cody attributes a lot of his success to what he learned on the family ranch. Cody and his wife Mindy have a young boy named Tripp and they enjoy getting to spend time together with family and friends.

Golder

Renowned for technical excellence in geosciences and environmental solutions, Golder is a global, 100% employee-owned consulting firm with over a half century of successful service to our clients. Working across all seven continents, our 6,500 professionals flourish in an environment where collaboration and innovation are fostered. We deliver a level of excellence and expertise that is safe, innovative, industry-leading and is always focused on a shared vision of success with our clients.

Golder's global mining business provides integrated engineering and environmental services to achieve the objectives of our mining clients in all market conditions. Our team of over 1,800 dedicated mining professionals work across all stages of the mine life cycle, from exploration to closure. Golder's full mining solutions include:

- Mine Engineering, Geology and Stability
- Mine Waste
- Mine Water
- Mine Environment and Permitting
- Mine Closure
- Mine Infrastructure and Construction Services

Our strong presence in the Southwest allows us to draw on both global and local expertise to deliver innovative, cost-effective mining solutions to our clients in the region. Golder values the relationships we have cultivated throughout the Southwest via our offices in Phoenix and Tucson, Arizona, and Albuquerque and Silver City, New Mexico.

Golder is proud to contribute to industry leading initiatives such as developing the closure guidelines for Asia-Pacific Economic Cooperation (APEC) nations and the recently released International Council on Mining & Metals (ICMM) Mine Closure Good Practice Guide. Industry staples, the Mathew's Method and the Scaled Span Method for crown pillar stability assessments, were both developed by Golder. Our teams have also contributed to many mining guidelines, including authoring the mine waste dump and stockpile design guidelines and the Global Acid Rock Drainage Guide. We are proud to take an active role in the mining community through our involvement in local, national and international mining associations, committees and conferences.

At Golder, we thrive on challenges, and there's no challenge we are more passionate about than the safe, economical and sustainable development of Earth's natural resources.



American Mining Hall of Fame

Inductees (1983-2018)

1983	George E. Atwood	2001	A. Dan Rovig
1984	Charles F. Barber	2002	J. David Lowell
1985	George B. Munroe	2003	Thomas J. O'Neil
1986	John C. Duncan	2004	J. Steven Whisler
1987	Plato Malozemoff	2005	Pierre Lassonde
1988	Simon D. Strauss	2006	Jack E. Thompson, Jr.
1989	G. Robert Durham	2007	Dennis R. Washington
1990	Harry M. Conger III	2008	Timothy R. Snider
1991	Kenneth J. Barr	2009	Tom Albanese
1992	T.S. Ary	2010	Richard C. Adkerson
1993	Milton H. Ward	2011	Laurence Golborne Riveros
1994	J. Burgess Winter	2012	Gregory H. Boyce
1995	Douglas C. Yearley	2013	James D. Toole
1996	Richard de J. Osborne	2014	Armine Frederick Banfield, Jr.
1997	James R. Moffett	2015	Conrad Huss
1998	Charles G. Preble	2016	Oscar González Rocha
1999	Irl F. Engelhardt	2017	Gary Goldberg
2000	Ronald C. Cambre	2018	Harry M. (Red) Conger



Industry Partnership Awards (1995-2018)

1995	Caterpillar, Inc. - Glen A. Barton	2008	Atlas Copco Construction Mining Technique USA LLC
1996	AMIGOS (Arizona Mining & Industry Gets Our Support)	2009	Boart Longyear Company
1997	Colorado School of Mines	2010	Prospectors and Developers Assoc. of Canada
1998	Stephen D. Bechtel, Jr. and Bechtel Corporation	2011	Chilean Government/Industry Partnership
1999	Mineral Information Institute	2012	Komatsu America Corp.
2000	Modular Mining Systems, Inc.	2013	Joy Global
2001	Mintec, Inc.	2014	Empire Southwest
2002	Senator Larry Craig	2015	InfoMine
2003	Aker Kvaerner	2016	WestLand Resources, Inc.
2004	Mining and Metallurgical Society of America	2017	SRK Consulting
2005	Northwest Mining Association	2018	Sundt Construction, Inc.
2006	Mountain States Legal Foundation		
2007	M3 Engineering & Technology Corporation		

American Mining Hall of Fame

Medal of Merit Recipients (1989-2018)

1989	Ralph J. Roberts	2005	Larry McBiles
1989	Victor H. Verity	2005	Wayne C. Hazen
1990	John S. Livermore	2006	Leonard R. Judd
1991	George O. Argall, Jr.	2006	Roshan B. Bhappu
1992	Arthur A. Brandt	2007	William G. Davenport
1992	William C. Epler	2007	Harry Parker
1993	Walter E. Heinrichs, Jr.	2008	Barbara A. Filas
1993	Willard C. Lacy	2008	Paul Arthur Hodges
1994	Donnell W. Agers	2009	Mary M. Poulton
1994	J. David Lowell	2009	Jean Michel Rendu
1994	Ronald R. Swanson	2010	Terence P. McNulty
1995	Warren Kay Pincock	2010	Nyal Niemuth
1996	Richard W. Hutchinson	2011	Marco T. Einaudi
1996	Charles L. Pillar	2011	Ralph B. Sievwright
1997	Hugo T. Dummett	2012	David C. Lincoln
1997	Spencer Rowe Titley	2012	Matthew D. Lengerich
1998	David N. Skillings, Jr.	2013	Joseph M. Keane
1998	José Rubén Velasco Rodríguez	2013	Sean D. Dessureault
1999	Paul S. Allen	2014	Corale L. & James A. Brierley
1999	William C. Peters	2014	David E. Nicholas
2000	Leonard Harris	2014	Scott M. Shields
2000	Pedro Sánchez-Mejorada	2015	Charles Michael (Mick) Lownds
2001	William H. Dresher	2015	Fiorella Giana
2001	Warren E. Fenzi	2016	William R. Assenmacher
2002	Richard D. Call	2016	Justin Cross
2002	Kenneth L. Zonge	2016	Michelle Lammers
2003	Stanley H. Dempsey	2017	John Lacy
2003	James Wm. White	2017	Eben Robinson
2004	Edward S. Frohling	2018	Hugh Miller
2004	Joaquin Ruiz	2018	Marian LaLonde

Mining Foundation of the Southwest

Officers

Chris Wilson - *President*
 Rebecca Martinez - *Vice President*
 Andrew Soderman - *Secretary*
 John Fenn - *Treasurer*

Board of Governors

Kathy Arnold
 Jean Austin
 Mark Baker
 Robin Barnes
 Amanda Best
 Donald F. Earnest
 William E. Hawes
 Corolla (Cori) Hoag
 Steve Holmes
 Martin C. Kuhn
 Terry McNulty
 Allison Moore
 Nyal Niemuth
 David Rhoades
 Brad Ross
 Luiz Steinberg
 Donald R. Taylor
 David Travis
 Will Wilkinson
 Rod Woodcock

Gold Members

Curtis Bilow
 Lenny Boteiho
 John Fenn
 Gary J. Goldberg
 Shawn Hamilton
 Corolla (Cori) Hoag
 Steven C. Holmes
 Terry McNulty
 Thomas Scartaccini
 Thomas D. Toole
 David Travis
 J. Steven Whisler

Sustaining Members

Lawrence G. Dykers
 Timothy R. Snider

Honorary Members

Armine Frederick Banfield
 Roshan B. Bhappu
 Michael Canty

Silver Members

John Alden
 Doug Arnold
 Kathy Arnold
 Jean Austin
 Stanley Dempsey
 R. Gene Dewey
 Donald F. Earnest
 Richmond Fenn
 Barbara Filas
 Nancy Gracia-Gungor
 John C. Lacy
 Greg Lucero
 Allison Moore
 Brian Norton
 A. Dan Rovig
 Arlan Ruen
 Luiz Steinberg
 James Stephens
 Mark Sutton
 Lyn Thomas
 Gene Waken
 Susan Wick
 Will Wilkinson

In Memoriam

Douglas C. Austin
 Marvin A. Hustad
 William C. Peters
 Ralph Sievwright
 Spencer R. Titley



MFSW Outreach Coordinator

CHRISTOPHER EARNEST
earnest@email.arizona.edu

Lowell Institute for Mineral Resources
The University of Arizona

Molly Radwany has gone back to Grad school to get her masters in Mining. The MFSW thanks her and wishes her success in the future.



Team members collaborating on their mine plan during the Observer Day workshop at the International Science and Engineering Fair

BB Mining at the Girl Scout Fest

SPECIAL THANKS

The American Mining Hall of Fame Committee of the Mining Foundation of the Southwest wishes to thank Modular Mining for its continued support in overseeing the production of this program.