



Eighth Annual

**American
Mining Hall of Fame
Awards Presentation
and Banquet**

December 1, 1990

**Sponsored by
Mining Club of the Southwest Foundation, Inc.**

The Westin La Paloma, Tucson, Arizona

Program

Reception*	6:30 p.m.
Banquet Dinner	7:30 p.m.
Ceremony	9:00 p.m.
Welcoming Remarks — Robert A. Metz	
Introduction of Head Table and Other Honored Guests	
Presentation of 1990 Inductees — Thomas A. Rickard Wesley P. Goss	
Presentation of 1990 Medal of Merit — John S. Livermore	
Introduction of 1990 Recipient — Harry M. Conger	
Featured Address — Harry M. Conger	
Adjournment	

** Hosted by:*

ASARCO Exploration
Henkel Corporation
Independent Mining Consultants
Industrial Motor & Control, Inc.
M₃ Engineering & Tech
McBride Equipment Company
Mintec Inc.
Modular Mining Systems, Inc.
Southwest Energy, Inc.
Sundt Corp., Industrial Division
U.S. Casting, Inc.
Western States Tire Company

1990 MCSW Officers

Robert A. Metz, President
Daniel T. Eyde, First Vice President
Duane L. Pinter, Second Vice President
Al G. Chicago, Third Vice President
A. Frederick Banfield, Jr., Secretary-
Treasurer

1990 Hall of Fame Committee

John C. Lacy, *Chairman*
Daniel T. Eyde
Robert A. French
Edmund N. Hannifin
Thomas O'Neil
James D. Sell
Jack E. Thompson
Jan C. Wilt

American Mining Hall of Fame



HARRY M. CONGER
1990 Recipient

Harry M. Conger, Chairman and Chief Executive Officer of Homestake Mining Company, began his career as a mining engineer and shift boss for ASARCO in Arizona, after earning a degree in mining engineering in 1955 from the Colorado School of Mines. He joined Kaiser Steel Corporation in 1964 and became manager of their mine at Eagle Mountain, California; in 1970 he moved to Fernie, British Columbia, as Vice President and General Manager of Kaiser Resources, Limited. From 1973 to 1975, Mr. Conger was Vice President and General Manager of the Midwestern Division of Consolidated Coal Company in Illinois.

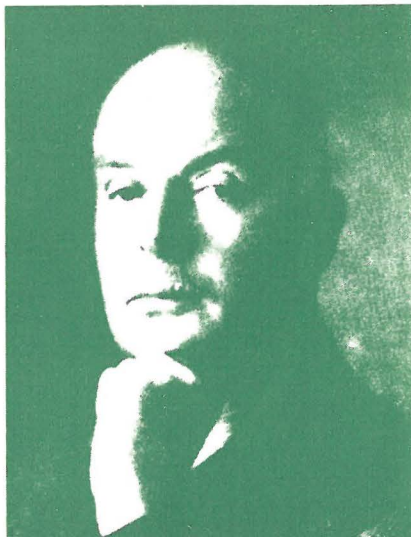
He began his career with Homestake in 1975 as Vice President and General Manager of the Base Metals Division. He was elected President and Member of the Board of Directors in 1977, Chief Executive Officer in 1978, and Chairman of the Board of Directors in 1982. Mr. Conger also serves as a Director of ASA Limited, Pacific Gas & Electric Company of San Francisco, Baker Hughes Inc. of Houston, and CalMat Company of Los Angeles. He is also a Director of the San Francisco Bay Area Council, a member of the Board of Trustees of the California Institute of Technology in Pasadena, and a member of the SRI Advisory Council in Menlo Park.

Mr. Conger is past Chairman of the American Mining Congress (1986-1989), past Chairman of the Western Regional Council, Distinguished Member of AIME, and Member of the National Academy of Engineering. Honors bestowed upon Mr. Conger include the Charles F. Rand Memorial Award in 1990 from the American Institute of Mining, Metallurgical & Petroleum Engineers, a Distinguished Achievement Medal by the Colorado School of Mines in 1978, and honorary doctorates from the South Dakota School of Mines and the Colorado School of Mines.



Mining Club of the Southwest Foundation
Tucson, Arizona December 1, 1990

American Mining Hall of Fame



THOMAS ARTHUR RICKARD

1864-1953

1990 Inductee

T. A. Rickard had a significant influence on the mining industry through his editorship of the three principal mining journals of the English-speaking world from 1903 to 1929 and through his popular books on the techniques, history and romance of mining. In 1937 he wrote in the preface to his autobiography, "A man is not old so long as he is eager to learn and ready to express an opinion."

He was born in Italy to an English family of examining mining engineers and was educated first in Czarist Russia and then at Queen's College in Taunton, England. He matriculated at the University of London in 1881 and graduated from the Royal School of Mines in London in 1885. He came to Colorado as a surveyor and assayer in 1885, was a mine manager in California from 1887-1889, and was the state geologist of Colorado from 1895-1901. Throughout his career, but especially intensively until his marriage in 1898, he worked as a consulting mining engineer and traveled from his home base in Denver to examine mines in Australia, New Zealand, Canada, Alaska, Africa, Cyprus, Greece, Italy, France, Mexico, and Spain.

Mr. Rickard was editor of *The Engineering and Mining Journal* from 1903-1905 and 1922-1929, of *Mining and Scientific Press* of San Francisco from 1906-1909 and 1915-1922, and of *The Mining Magazine* of London from 1909-1915. He also was a lecturer in mining geology at Harvard University from 1912-1915 and contributed numerous articles to scientific journals. Mr. Rickard wrote more than a dozen books about mining, including *Man and Metals* (1932), *A History of American Mining* (1932), *Retrospect* (1937), and *The Romance of Mining* (1944). He was honored with a Sc.D. from Colorado School of Mines in 1927 and with the Gold Medal from the Institution of Mining and Metallurgy of London in 1932; the copper telluride mineral, rickardite, was named in his honor.



Mining Club of the Southwest Foundation
Tucson, Arizona December 1, 1990

American Mining Hall of Fame



WESLEY P. GOSS

1899-1985

1990 Inductee

Wesley P. Goss began his mining career at Jerome, Arizona, following his graduation from the University of California at Berkeley in 1922 with a Bachelor of Science in Mining Engineering. He held positions of continually increasing responsibility throughout his career. He became Assistant Superintendent in 1933 at the United Verde Copper Company in Jerome and then was General Superintendent of the Park City Consolidated Mines Company in Utah from 1934-1937. He moved to the O'Kiep Copper Company in South Africa as Mine Superintendent from 1937-1941 and then returned to the United States as Assistant General Manager of the Grey Eagle Copper Company in Happy Camp, California from 1942-1944.

Mr. Goss joined Magma Copper Company in 1944 as Vice-President and General Manager at Superior, Arizona, and held that position through 1953. He became President and General Manager of Magma in 1954 and served through 1971 when he retired from daily management. He continued to work as Chairman of the Board of Directors until 1983. His foresight, courage and skill were important to the development and successful operation of the underground block-caving mine, concentrator, smelter and related facilities at San Manuel, Arizona.

Wes Goss had a strong commitment to community service. He was a member and President of the Arizona Board of Regents from 1963-1970 and was a member of the Arizona Tariff Board. He was on the board of directors of numerous organizations and companies, including the Boyce Thompson Southwestern Arboretum, Newmont, Homestake, Southern Arizona Bank, Apache Powder Company, and Magma Arizona Railroad. He was a founder, director and President of the Arizona Mining Association and was active in numerous professional societies. In 1966 the American Institute of Mining Engineers (AIME) bestowed its highest honor on Mr. Goss by presenting him with the William Lawrence Saunders Gold Medal Award for his leadership in developing the San Manuel deposit.



Mining Club of the Southwest Foundation

Tucson, Arizona

December 1, 1990

American Mining Hall of Fame

1990 Medal of Merit Recipient



John S. Livermore

John S. Livermore is an exploration geologist who has significantly contributed to the mining industry through his discoveries and development of four disseminated gold mines in the Carlin trend in Nevada. Mr. Livermore's open mind and nonreliance on preconceived geological theories and his ability to integrate facts into new geological concepts are important keys to his success. Mr. Livermore is more than a prospector, he is an ore finder, ore developer, and ore producer.

John Livermore was born in 1918, has earned a A.B. degree in Geology from Stanford University in 1940 and worked as an engineer in the Construction Battalions of the U.S. Navy in the Pacific in World War II. He began his career in the mining industry in 1949 at the Standard mine near Lovelock, Nevada, and began working for Newmont in 1952, traveling to South America, Africa, and the Middle East, finding additional reserves of base metals. In 1958 he was promoted to the New York office of Newmont and in 1960 he persuaded management to allow him to search for gold in Nevada. A sampling program under his direction in the Eureka area in 1961 culminated in 1965 with the first production of gold from the Carlin mine. In 1962 Mr. Livermore became President of Newmont Mining Company of Canada. He returned to gold exploration in Nevada in 1970, when he established Cordex Exploration Company, and discovered the Preble and Pinson mines in 1971 and the Dee mine in 1981.

John Livermore has a strong commitment to learning and has supported education of the general public, university students, and public policy makers. He is on the Board of Trustees and Science Committee of the California Academy of Sciences Natural History Museum in San Francisco. Mr. Livermore has also been generous to Stanford University and the University of Nevada at Reno, where he was instrumental in establishing the Arthur Brant Chair for mining geophysics. Mr. Livermore is also a founder and Vice President of Public Resource Foundation, a private nonprofit foundation which works on developing balanced public land policies.

Mining Club of the Southwest and American Mining Hall of Fame

It could be said that a mining club in the southwest had its beginnings when the Spanish conquistadores came into the area with minerals on their minds and swapped ideas over a bottle of wine. For the last 100 years miners have talked about a place where they could get together. As copper production in the southwest grew and centered about Tucson, so did the need for a mining club.

The Mining Club of the Southwest, as it now exists, was spawned in late 1970 by a group of Tucson based engineers, metallurgists and geologists; opened its door officially on February 1, 1971; and was incorporated by the State of Arizona on February 22, 1971.

The Mining Club of the Southwest is governed by a group of 24 Board members who serve for a term of three years; one-third of which are elected at the annual meeting each year in February. The immediate past president acts as the 25th governor. Officers and committee chairmen are chosen from members of the Board.

Several allied groups use the Club meeting rooms regularly. Such groups are Southwestern Mineral Exploration Association, Arizona Prospector and Small Mine Operators Association, and Women in Mining. Many groups schedule occasional meetings in the Club quarters.

In the fall of 1981 the Mining Club of the Southwest sponsored the highly successful Second Mexican Mining Rail Excursion. Participants visited mines, mills and smelters throughout Mexico during the specially arranged two-week tour, and enjoyed unforgettable hospitality from their Mexican hosts.

Shortly thereafter the MCSW Foundation was established to allow for tax deductible contributions to be used for charitable and educational purposes. On December 3, 1983, the American Mining Hall of Fame was inaugurated to honor significant contributors to the industry and profession, to provide a forum for better public understanding of the industry, and to raise funds to endow charitable and educational activities of the Foundation.

Currently the American Mining Hall of Fame may be visited at the headquarters of the Mining Club of the Southwest. Leading mining companies, members and friends have donated photographs, artifacts and mineral specimens which give the Club decor its unique flavor and appeal and add to the authentic atmosphere. The plaques commemorating the induction of honorees are on display at the Arizona Historical Society's Tucson Museum at 949 E. 2nd Street.

American Mining Hall of Fame

1983 Recipient
George E. Atwood

1984 Recipient
Charles F. Barber

1985 Recipient
George B. Monroe

1986 Recipient
John C. Duncan

1987 Recipient
Plato Malozemoff

1988 Recipient
Simon D. Strauss

1989 Recipient
G. Robert Durham

1983-1989 Inductees

Maxie L. Anderson
1934-1983

James Douglas
1837-1918

Charles F. Fogarty
1921-1981

Antoine M. Gaudin
1896-1974

William C. Greene
1853-1913

John C. Greenway
1872-1926

Hal W. Hardinge
1855-1943

Herbert C. Hoover
1874-1964

Daniel C. Jackling
1869-1956

Ira B. Joralemon
1884-1975

Henry Krumb
1875-1958

Waldemar Lindgren
1860-1939

Curtis H. Lindley
1850-1920

John William Mackay
1831-1901

Seeley W. Mudd
1861-1926

Rossiter W. Raymond
1840-1918

Robert H. Richards
1844-1945

Louis D. Ricketts
1859-1940

Reno H. Sales
1876-1969

Fred Searls, Jr.
1888-1968

Arthur F. Taggart
1884-1959

William Boyce Thompson
1869-1930

Medal of Merit Recipients

Ralph J. Roberts, 1989

Victor H. Verity, 1989