



Thirty-Sixth Annual
American Mining Hall of Fame



**Awards
Presentation**
BANQUET & FUNDRAISER

Saturday, December 1st, 2018
JW Marriott Starr Pass Resort & Spa, Tucson, Arizona

Program

6:00 p.m.

RECEPTION

7:00 p.m.

BANQUET

8:00 p.m.

CEREMONY

Welcoming Remarks: **DAVID TRAVIS**, PRESIDENT, MFSW

Introduction of Honorees
and Honored Guests: **DAVID TRAVIS**

Awards Opening Remarks: **CHRIS WILSON**, VICE PRESIDENT, MFSW

Recognition for Pam Wilkinson **DR. MARY POULTON**, Co-DIRECTOR IMR

Presentation of Inductees
From Mining's Past **ANDREW PRICHARD** (1830 - 1902)

BY CHRIS WILSON: **WILLIAM H. PEIRCE** (1865 - 1944) AND
E.A. CAPPELEN SMITH (1873-1949)

MEDORA HOOPER KRIEGER (1905 - 1994)
ACCEPTED BY KATHERINE PESSIN

ROBERT SCANLAN (1936 - 1972)

Presentation of Medal of Merit
BY CHRIS WILSON: **DR. HUGH MILLER**

Presentation of Medal of Merit
Under age 40 BY CHRIS WILSON: **MARIAN LaLONDE**

Presentation of Industry Partnership
Award BY CHRIS WILSON: **SUNDT CONSTRUCTION, INC.**
ACCEPTED BY CLINT SUNDT, VICE PRESIDENT

Presentation of Special Recognition
Award BY CHRIS WILSON: **SOUTHERN ARIZONA BUSINESS COALITION
(SABC)**
ACCEPTED BY RICK GRINNELL AND BILL ASSENMACHER

Grand Door Prize: **CHRIS WILSON**

Presentation of Inductee
BY RICHARD C. ADKERSON: **HARRY M. "RED" CONGER**

Featured Address: **HARRY M. "RED" CONGER**

Adjournment: **DAVID TRAVIS**



Sponsors

DIAMOND

Epiroc - Part of the Atlas Copco Group

PLATINUM

FLSmidth

Freeport-McMoRan Inc.

Independent Mining Consultants

Komatsu America Corp.

M3 Engineering & Technology Corporation

Mining & Metallurgical Society of America

Southwest Energy LLC

Timothy R. Snider

GOLD

Ames Construction

Arizona Mining Association

ASARCO – AMC, Grupo Mexico

Barrick

Doosan Bobcat

Empire Southwest

Mined-Out

Modular Mining Systems, Inc.

Newmont Mining Corporation

PLS Logistic Services

Royal Gold

Ruen Drilling

SRK Consulting

Stantec

WestLand Resources, Inc.

SILVER

Apache Nitrogen Products Inc.

Arcadis

CAID

Cascade

Cementation

Copper State Bolt & Nut Co.

CTI

Fennemore Craig P.C.

Golder Associates

Hexagon Mining

Hudbay Minerals Inc.

IEC Supply

KGHM (Carlot Copper Company)

Lhoist North America

Meridian Engineering Company

Montgomery & Associates

Motion Metrics International

Orica

Origin Mining Company LLC

Professional Minerals Development, LLC

Progressive Environmental Services

Quarles & Brady LLP

Skyline Assayers & Laboratories

South 32

SUNDT Construction, Inc.

George A. Tsiolis, Attorney at Law

Valley Forge and Bolt Company

Yellow Jacket Drilling Services

OTHERS

E3 Strategies LLC

Golden Vertex

National Mining Hall of Fame & Museum

Southern Arizona Business Coalition

Split Engineering, LLC

Mining Foundation of the Southwest

The Mining Foundation of the Southwest (MFSW) was incorporated in 1982 by combining the Mining Club of the Southwest and the Mining Club of the Southwest Foundation. The purpose of the Foundation is to promote the value of the industry to our community and profession to ensure its future success.

Funds generated through the annual banquet are earmarked to support our mission. The MFSW also partners with the Lowell Institute for Mineral Resources at the University of Arizona and is the principal financial funding source for its Outreach Education Program.

At its annual fundraiser, the American Mining Hall of Fame honors the achievement of industry leaders. Including the 2018 inductees, 229 mining luminaries and organizations have been inducted and some

commemorative plaques of past honorees are on display at the Arizona Historical Society Museum at 949 E. 2nd Street in Tucson.

Mining Foundation of the Southwest



P.O. Box 42317
Tucson, AZ 85733

THOMAS L. ALDRICH
EXECUTIVE DIRECTOR
Phone: (520) 577-7519
Fax: (520) 577-7073

email: admin@miningfoundationsw.org
www.miningfoundationsw.org

2018 Hall of Fame Committee

Chris Wilson - *Chair*

Robin Barnes
Mark Baker
Amanda Best
Roshan B. Bhappu
Lawrence G. Dykers
Donald F. Earnest
John Fenn
William E. Hawes
Corolla (Cori) Hoag

Steve Holmes
Rebecca Martinez
Brad Ross
Thomas Scartaccini
Andrew Soderman
David Travis
William H. Wilkinson
Rodney Woodcock

Harry M. “Red” Conger**PRESIDENT & CHIEF OPERATING OFFICER – AMERICAS | FREEPORT-MCMORAN INC.**

Harry M. (Red) Conger is president and chief operating officer - Americas, and is responsible for management of the company's North and South America copper mining operations and Climax Molybdenum Co. This includes nine mining operations in North America, two in South America, and the associated downstream processing facilities. These operations employ more than 15,000 people and have annual copper production of 2.7 billion pounds and annual molybdenum production of 92 million pounds from mines operated by Freeport-McMoRan. He also has environmental and corporate social leadership responsibilities in North and South America.

Mr. Conger began his career at the Kennecott copper mine at Bingham Canyon in Utah in 1977, which led to a 20-year career with Phelps Dodge Corporation overseeing all aspects of mining and processing at several North America operations and all South America operations. During that time, he progressed through a multitude of senior management roles

of increasing responsibility before becoming president of Freeport-McMoRan Americas in 2007, following Freeport-McMoRan's acquisition of Phelps Dodge that same year. He assumed the role of president and chief operating officer in July 2015.

Throughout his career, Mr. Conger has been recognized for his leadership in safety and is considered a leader in change management and production efficiency. He recently served as chairman of the National Mining Association 2014-2015, where he has been a member of the Executive Committee since 2007. He also served as co-chairman of the initiative Creating Global Prosperity: The Campaign for Mining, launched by the Society for Mining, Metallurgy and Exploration.

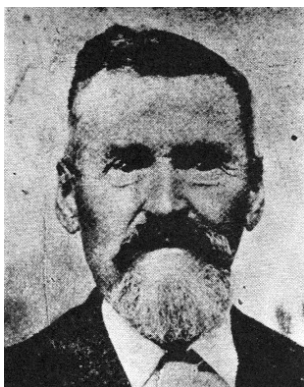
Mr. Conger was bestowed the honor of being named the 2018 Ankh Award Winner and Copper Man of the Year for his leadership in promoting improvements in workforce safety and building strong collaborative relationships with local communities. In 2017, Mr. Conger was the honored recipient of the Charles F. Rand Memorial Gold Medal in recognition of his leadership in safety, change management and production efficiency and for his contributions to SME. In 2016, Mr. Conger was selected the William N. Poundstone Lecturer by the Benjamin M. Statler College of Engineering and Mineral Resources at West Virginia University. In 2009, Mr. Conger received the Daniel C. Jackling Award for his significant contributions to technical progress in mining and in 2007 was the recipient of the Colorado School of Mines Distinguished Achievement Medal. Mr. Conger is a former commissioner on the New Mexico mining commission, and served on an Arizona water review commission.

Mr. Conger received his bachelor of science in mining engineering from Colorado School of Mines. He has completed post-graduate executive management studies at Duke University Fuqua School of Business, and Whitmore School of Business and Economics at the University of New Hampshire.

He and his wife Sissy have four children and reside in Phoenix, Arizona.

Andrew J. Prichard (1830 - 1902)

EXPLORER AND PROSPECTOR



Andrew J. Prichard, was born in Connecticut in 1830. He married Louisa Poland in the early 1850's. He served in the Union Army in the Civil War. During this time, his wife died, so after the Civil War, he prospected his way through New Mexico, Colorado, Montana and on into Idaho. He was one of the early users of the reopened Mullan Road, which provided a way across the Bitterroot Mountains into Idaho.

He arrive in Idaho in 1879. Here, he first worked as a logger. In 1881, he and Samuel Thomas Irwin, another seasoned prospector, joined forces and prospected, sometimes as a team, other times separately. In 1883, Prichard announced the discovery of gold in the creeks and tributaries of the Coeur d'Alene River. This discovery came at a most opportune time for the Northern Pacific Railroad, which seized upon the discovery to stimulate ticket sales on the newly built railroad which was within 25 miles of the discovery.

In addition to working placers along the creeks, Prichard also has the distinction of locating the oldest lode claim in the Coeur d'Alenes, the "Evolution", staked and recorded in 1882. New arrivals to the area found better prospects in veins carrying substantial silver and lead values than in the spotty placer deposits. This, and the arrival of the railroad, which made it economic to ship ores to smelters and refineries, led to the development of the mighty Coeur d'Alene mining district.

Prichard died in Murray, Idaho in October, 1902.

William H. Peirce (1862 - 1944) & E.A. Cappelenn Smith (1873 - 1949)

METALLURGICAL INNOVATORS



Cappelen Smith



William H. Peirce

Cappelen Smith was born in 1873 in Norway. He grew up as the eldest son among nine children. He was educated as a chemist at the Norwegian University of Science and Technology. He immigrated to the United States in 1893.

Born in 1865, **William H. Peirce** was an American civil engineer and metallurgist. Almost 19, Pierce Graduated from Stevens Institute in 1884 finishing in one year the requirements of his Junior and Senior years.

Pierce joined the Baltimore Copper Smelting & Rolling Company in 1890, becoming vice president in 1895 and later, president. Cappelenn Smith was employed as head metallurgist for the company from 1901-10.

At that time, the Manhès-David process was primarily used for copper-converting. It had been directly derived from the Bessemer process used in the steel industry. The basic slag produced during the blowing combined with the acid silica refractory lining, resulting in a very short lifetime of the lining.

Mr. Smith suggested basic converting for the treatment of copper matte in the belief that the converting to blister could be conducted in one vessel with the production of metal and an exceptionally clean slag and substantially increasing the life of the refractory lining.

In 1908, the first experiment was made in a basic lined 25-ton reverberatory furnace with blow pipes through the side walls and roof. All was very crude, but the indications of success led to the design of the Peirce-Smith converter.

The Peirce-Smith converter quickly replaced the Manhès-David converter. The process has been significantly improved over the years and Peirce-Smith converters refine 90% of the copper matte produced in the world today.

Medora Hooper Krieger (1905 – 1994)

PIONEERING GEOLOGIST



Medora Hooper was born in 1905 in Ticonderoga, N.Y. She earned her bachelor's degree in geology from Vassar College in 1928, then attended Columbia University for her master's and PhD degrees. There, she met her future husband, Philip Krieger, who had completed his PhD in geology and was an assistant Professor of Geology. They were married in 1931. She worked for the New York Geological Survey until 1939. Following the death of her husband in 1940, she taught at Mount Holyoke College in Massachusetts from 1942-1944.

Krieger joined the USGS in 1944. At that time the Survey did not allow women to work in the field, thinking the work was too hard and rough for a woman. In 1947, the Survey began to send its workers to various field locations. She became one of the first female Field Geologist when she was sent to the Southwestern Geology branch in Prescott, AZ.

The Survey was studying copper deposits. Her original assignment was to map around the Bagdad Mine, but not in the mine itself because the miners objected to women. She did what was considered a man's job in a man's world. She was an inspiration to other women geologists of her time.

By 1952, only 2 percent of the geoscience workforce in the USGS was female and even fewer were field geologists. Krieger became one of the most prolific USGS geologic mappers. She is known for her 35 years working in the State in Arizona, where she mapped a total of 21 topographic quadrangles.

Medora Krieger died at age 89 in 1994 in Prescott.

Robert Scanlan (1936 – 1972)

HOISTMAN AND HERO



Robert Scanlan was born and grew up in the southern Idaho farming town of Gooding. In 1955, he moved to Wallace. There, he married his wife Eva in 1956. They had three children. He advanced his career at the Sunshine Mine from mucker to miner to hoistman.

The Sunshine Mine was deep, and essentially was a mine within a mine. Access from the surface was through the Jewell Shaft, which extended from the surface to the 3700 foot level. Approximately one mile from the Jewell shaft was the #10 shaft, which ran from the 3100 level to the deepest working level, at the time 5600. Most of the mine's production came from areas served by the #10 shaft.

Principal escape ways were the 3700 level and the 3100 level, both connecting with the Jewell shaft. There was also an escape way on 3100, which connected to the Silver Summit mine. Because of the importance of the #10 shaft in evacuating the mine, two hoistmen were in attendance, in the unlikely event of something incapacitating the operator.

On May 2, 1972, a crew of 178 was working underground. Operations continued normally, until about noon, when fire was reported. Smoke soon appeared in the hoist room. Self-rescuers were donned, but smoke began to overpower the hoistmen. Ira Silger, the senior hoistman, had respiratory problems. Bob Scanlan told him to leave and he would continue to operate the hoist. Silger escaped the mine. Bob Scanlan heroically gave his life in attempting to hoist the crew to safety.

Dr. Hugh Miller

ASSOCIATE PROFESSOR, MINING ENGINEERING DEPARTMENT | COLORADO SCHOOL OF MINES



Dr. Hugh B. Miller is an Associate Professor in the Mining Engineering Department at the Colorado School of Mines (CSM), where he teaches courses and conducts research in a variety of subjects including mine design & operations, project feasibility, occupational safety, and hydro-excavation. While at CSM, Hugh has also served as the Interim Department Chair for Mining Engineering, as a representative on the Faculty Senate, an administrator for the Western Mine Safety Training Center, and on countless internal committees associated with student activities, institutional governance, and departmental operations.

Before joining CSM in 2005, Hugh spent 6 years teaching at the University of Arizona, Mining & Geological Engineering Department and was the Director of the San Xavier Mining Laboratory and Co-Director of the International Center for Mine Health, Safety, and Environment.

Prior to entering academia, Hugh worked 13 years for several mining, resource, and engineering companies in capacities ranging

from mine operations to that of management, including four years as Director of Operations for International Engineering Technology, Inc. (IET). At IET, Hugh oversaw a wide range of projects related to equipment development and technologies associated with underground mining, civil-construction, and drilling systems. Through his career, he has served on the Boards of numerous companies and professional organizations and regularly consults in the technical and economic evaluation of mines and mineral resources, as well as the integration of new technologies and equipment in mining and excavation. Hugh currently serves as a technical advisor for RAMAX Ltd. and as a Director for the Society for Mining, Metallurgy, & Exploration (SME). Hugh is extremely active in several professional and civic organizations, and will serve as the 2019 President of SME.

As voted by graduating students, Hugh has received a combined 15 teaching and mentoring awards while working at two different universities over the 17 years he has been in academia. He received the SME Presidential Citation in 2015 and the SME Mining & Exploration Division Distinguished Service Award in 2011. Hugh was inducted as a SME Distinguished Member in 2012 and received the AIME/SME Mineral Industry Education Award and the AIME Honorary Member Award in 2017.

Hugh received his undergraduate and graduate degrees from the Colorado School of Mines and is a registered “Qualified Person” for Mining and Mineral Resource Estimation by MMSA.

Miller and his wife, Nadia, a petroleum engineer, have been married for 31 years and live in Golden, CO. They have two sons, Matt and Jerry, who are both mining engineers and work for Southwest Energy and Intrepid Potash respectively.

MARIAN LALONDE

PARTNER | QUARLES & BRADY LLP

Marian LaLonde vividly remembers breathing a sigh of relief when she discovered a local nonprofit dedicated to helping homeless youth -- Youth on Their Own ("YOTO"). She was a high school junior living on her own and working two jobs. She wasn't just thankful for YOTO's financial assistance and free toiletries, but for the emotional support as well. YOTO's encouragement was a turning point in a life previously marked by violence and juvenile delinquency. LaLonde turned her focus towards horses and an agricultural education program that she credits with saving her life. She was selected as Arizona's outstanding vocational student and was honored as one of Tucson's Ten Outstanding Teen Citizens. LaLonde was intent upon continuing her education at the University of Arizona and pursuing a degree in agriculture, which she accomplished in 2001. She then went on to earn her Juris Doctorate at the University of Arizona, James E. Rogers College of Law in 2006.

LaLonde worked as a Rule Writer for the Pima County Department of Environmental Quality and, after earning her law degree, she was hired as an Associate Attorney at DeConcini McDonald Yetwin & Lacy PC. There she became a shareholder and honed her skills in mining law under the tutelage of John Lacy. She was honored in 2008 as the 40 Under 40 Woman of the Year by Tucson Business Edge and has been named on *Southwest Super Lawyers*® magazine Rising Stars list from 2014 – 2017.



In 2013, Ms. LaLonde joined the Tucson office of Quarles & Brady LLP as a Partner in the Energy, Environment & Natural Resources Practice Group. Her practice now focuses on real estate, public and tribal lands, natural resources, mining, environmental, energy, corporations, tax-exempt organizations, and equine law.

Ms. LaLonde served on the Board of the MFSW from 2013 – 2014 and led the Strategic Planning Effort of the MFSW in 2014. Additionally, LaLonde has served and currently serves on the Board for several nonprofit organizations including the Community Foundation for Southern Arizona and YOTO. LaLonde also continues to advocate for at-risk youth by speaking at events and seminars about her experiences in foster care and as a homeless teenager.

In her spare time, Ms. LaLonde competes in the eventing and show jumping disciplines with her horses Scarlett, Brooklin, and Owen. Ms. LaLonde also enjoys life on a ten-acre mini ranch with her husband Greg, six dogs, and one cat.

Sundt Construction, Inc.

Founded in 1890, Sundt Construction, Inc. is one of the country's largest and most respected general contractors. The 100 percent employee-owned company was named the nation's safest construction company by the Associated General Contractors of America in 2006 and 2016. The company's employee-owners are united around a single purpose: to build environments where our clients, employee-owners and communities prosper. Sundt builds projects in a collaborative environment, using best-in-class techniques to improve productivity, reduce costs, and deliver successful results for our clients.

Sundt serves clients in the mining, water, waste water, power, cement, chemical and manufacturing industries. Sundt solves the most complex industrial construction challenges and has a long, distinguished history of serving industrial construction clients across the U.S. and around the world.

Our trade work includes earthwork, underground utilities, concrete, structural steel erection, process mechanical, equipment setting and boilermaker work. These resources are used on mines, power generation facilities, industrial projects, and treatment plant facilities. Our equipment services owns, operates and maintains more than 100 pieces of heavy equipment that are an integral component of our self-perform work capabilities.

Our safety program is designed to support and maintain a positive safety culture while improving Sundt's overall safety record, which is already among the best in the industry. Most construction safety programs focus on the "how" of staying safe – processes and procedures to avoid accidents and injuries and keep projects running smoothly. Sundt's safety program, called "Safety By Choice", takes a different approach by giving equal emphasis to the "why" of safety. In addition to providing thorough, state-of-the-art construction safety training to our craft employees, we also focus on the many reasons they want and need to stay safe: their families, friends, health, livelihood and the ability to do their favorite activities.

Sundt has a long tradition of helping the communities where its employees live and work. Its Foundation is well known for supporting charities that provide services to disadvantaged adults and children. Its employees also volunteer to repair homes, build new facilities and participate in a variety of fundraising events such as charity walks and donation drives.



SUNDT

Southern Arizona Business Coalition (SABC)



Bill Assenmacher, CEO, CAID Industries and Rick Grinnell, President, Smart United Business Strategies formed the Southern Arizona Business Coalition (SABC), a not-for-profit corporation, in the spring of 2012. SABC's mission is to support the development of new, expanding and relocating industries with an emphasis on mining and related technology in Arizona. SABC also participates in efforts supporting military activities and personnel.

Our future and the futures of our children depend on a sustainable business environment that encourages the responsible development of natural and human resources. Establishing strong partnerships with our sister organizations, Arizona Mining Association (AMA), AMIGOS and Arizona Rock Products (ARPA) and regional chambers allows us to educate the public about investments that create broad economic opportunities. Our collaboration also allows us to lobby our elected officials to advance responsible businesses and the employment opportunities that they bring.

Through our outreach efforts we look to counter uninformed, exaggerated and emotional statements that may impede new and expanding ventures. We provide substantiated facts that allow our audiences, inclusive of supporters, opponents, general public and politicians, to decide for themselves the value of the businesses and projects we support.

SABC, with industry partners, hold regular and special events to promote our mission. We continue to utilize our strong web presence, informational emails, speaking engagements, literature, social networking and advertising to provide the latest information that affects current, new and expanding ventures for the financial stability of our community.

We are grateful to the businesses and individuals that have supported SABC over the last six years and invite you to join with us to in supporting responsible, sustainable and profitable businesses for years to come.

www.SOAZBC.COM

American Mining Hall of Fame

Inductees (1983-2017)

1983	George E. Atwood	2001	A. Dan Rovig
1984	Charles F. Barber	2002	J. David Lowell
1985	George B. Munroe	2003	Thomas J. O'Neil
1986	John C. Duncan	2004	J. Steven Whisler
1987	Plato Malozemoff	2005	Pierre Lassonde
1988	Simon D. Strauss	2006	Jack E. Thompson, Jr.
1989	G. Robert Durham	2007	Dennis R. Washington
1990	Harry M. Conger III	2008	Timothy R. Snider
1991	Kenneth J. Barr	2009	Tom Albanese
1992	T.S. Ary	2010	Richard C. Adkerson
1993	Milton H. Ward	2011	Laurence Golborne Riveros
1994	J. Burgess Winter	2012	Gregory H. Boyce
1995	Douglas C. Yearley	2013	James D. Toole
1996	Richard de J. Osborne	2014	Armine Frederick Banfield, Jr.
1997	James R. Moffett	2015	Conrad Huss
1998	Charles G. Preble	2016	Oscar González Rocha
1999	Irl F. Engelhardt	2017	Gary Goldberg
2000	Ronald C. Cambre		



Industry Partnership Awards (1995-2017)

1995	Caterpillar, Inc. - Glen A. Barton
1996	AMIGOS (Arizona Mining & Industry Gets Our Support)
1997	Colorado School of Mines
1998	Stephen D. Bechtel, Jr. and Bechtel Corporation
1999	Mineral Information Institute
2000	Modular Mining Systems, Inc.
2001	Mintec, Inc.
2002	Senator Larry Craig
2003	Aker Kvaerner
2004	Mining and Metallurgical Society of America
2005	Northwest Mining Association
2006	Mountain States Legal Foundation
2007	M3 Engineering & Technology Corporation
2008	Atlas Copco Construction Mining Technique USA LLC
2009	Boart Longyear Company
2010	Prospectors and Developers Assoc. of Canada
2011	Chilean Government/Industry Partnership
2012	Komatsu America Corp.
2013	Joy Global
2014	Empire Southwest
2015	InfoMine
2016	WestLand Resources, Inc.
2017	SRK Consulting

American Mining Hall of Fame

Medal of Merit Recipients (1989-2017)

1989	Ralph J. Roberts	2004	Edward S. Frohling
1989	Victor H. Verity	2004	Joaquin Ruiz
1990	John S. Livermore	2005	Larry McBiles
1991	George O. Argall, Jr.	2005	Wayne C. Hazen
1992	Arthur A. Brandt	2006	Leonard R. Judd
1992	William C. Epler	2006	Roshan B. Bhappu
1993	Walter E. Heinrichs, Jr.	2007	William G. Davenport
1993	Willard C. Lacy	2007	Harry Parker
1994	Donnell W. Agers	2008	Barbara A. Filas
1994	J. David Lowell	2008	Paul Arthur Hodges
1994	Ronald R. Swanson	2009	Mary M. Poulton
1995	Warren Kay Pincock	2009	Jean Michel Rendu
1996	Richard W. Hutchinson	2010	Terence P. McNulty
1996	Charles L. Pillar	2010	Nyal Niemuth
1997	Hugo T. Dummett	2011	Marco T. Einaudi
1997	Spencer Rowe Titley	2011	Ralph B. Sievwright
1998	David N. Skillings, Jr.	2012	David C. Lincoln
1998	José Rubén Velasco Rodríguez	2012	Matthew D. Lengerich
1999	Paul S. Allen	2013	Joseph M. Keane
1999	William C. Peters	2013	Sean D. Dessureault
2000	Leonard Harris	2014	Corale L. & James A. Brierley
2000	Pedro Sánchez-Mejorada	2014	David E. Nicholas
2001	William H. Dresher	2014	Scott M. Shields
2001	Warren E. Fenzi	2015	Charles Michael (Mick) Lownds
2002	Richard D. Call	2015	Fiorella Giana
2002	Kenneth L. Zonge	2016	William R. Assenmacher
2003	Stanley H. Dempsey	2016	Justin Cross
2003	James Wm. White	2016	Michelle Lammers
		2017	John Lacy
		2017	Eben Robinson

American Mining Hall of Fame

Inductees from Mining's Past (1983-2017)

M. Lee Allison	1948-2016	John Cromwell Lincoln	1866-1959
Maxie L. Anderson	1934-1983	Waldemar Lindgren	1860-1939
Frank William Archibald	1920-1987	Curtis H. Lindley	1850-1920
William Phipps Blake	1826-1910	Thomas S. Lovering	1896-1991
Robert Bogart	1923-2002	John William Mackay	1831-1901
Allan B. Bowman	1911-1982	Hugh Exton McKinstry	1896-1961
James Boyd	1904-1987	Donald H. McLaughlin	1891-1959
Bert S. Butler	1877-1960	Frank Wood McQuiston	1904-1987
Nellie Cashman	1849-1925	Bartolomé de Medina	1497-1585
Louis S. Cates	1881-1959	Charles Meyer	1915-1987
J. Parke Channing	1863-1930	Charles E. Mills	1867-1929
Roscoe Channing	1868-1961	Seeley W. Mudd	1861-1926
Thomas Garfield Chapman	1886-1965	Frank Murphy	1854-1917
Marco Chiapponi	1854-1929	Samuel Newhouse	1853-1930
William Andrews Clark	1839-1925	Georges Ordoñez	1907-1982
James Colquhoun	1857-1954	Jorge Larrea Ortega	1912-1999
Patrick Edward Connor	1820-1892	William Smith Otis	1813-1839
James Harold Courtright	1908-1986	Charles F. Park, Jr.	1903-1990
Arthur C. Daman	1889-1968	Arthur Barrette Parsons	1887-1966
Ernest R. Dickie	1902-1955	Richard Alexander Penrose, Jr.	1863-1931
John Van Nostrand Dorr	1872-1962	Charles Debrille Poston	1825-1902
James Douglas	1837-1918	Kenneth L. Power	1924-1978
James Stewart Douglas	1868-1949	Alberto Benavides de la Quintana	1920-2014
Herman Ehrenberg	1818-1866	Frederick Leslie Ransome	1868-1935
John Spence Finlay	1874-1935	Rossiter W. Raymond	1840-1918
Charles F. Fogerty	1921-1981	Kenyon E. Richard	1915-1993
Maurice C. Fuerstenau	1933-2012	Robert H. Richards	1844-1945
Antoine M. Gaudin	1896-1974	Thomas A. Rickard	1864-1953
Wesley P. Goss	1899-1985	Louis D. Ricketts	1859-1940
Louis Caryl Graton	1880-1970	Bernhardt Rohe	1909-1992
William C. Greene	1853-1913	Edwin Burton Royle	1905-1957
John C. Greenway	1872-1926	Reno H. Sales	1876-1969
Meyer Guggenheim	1825-1905	Harrison Ashley Schmitt	1896-1966
Hal W. Hardinge	1855-1943	Fred Searls, Jr.	1888-1968
George Hearst	1820-1891	Antonio Siraumea	1710-1760
Samuel Peter Heintzelman	1805-1880	Earl Tappan Stannard	1882-1949
Earl C. Herkenhoff	1915-2002	John Murchison Sully	1868-1933
Joseph Austin Holmes	1859-1915	Arthur F. Taggart	1884-1959
Herbert C. Hoover	1874-1964	William Boyce Thompson	1869-1930
Theodore Jesse Hoover	1971-1955	Howard Allen Twitty	1909-1989
Daniel C. Jackling	1869-1956	Stewart R. Wallace	1919-2009
H. Myles Jacob	1913-1997	Thomas F. Walsh	1850-1910
Ira B. Joralemon	1884-1975	Norman L. Weiss	1902-1986
Jack Furman Kemp	1859-1926	Kathy G. Whitman	1959-2012
Henry Krumb	1875-1958	Arthur Redman Wilfley	1860-1927
Thomas H. Leggett	1859-1935	Ben Williams	1852-1925
Henry Lesinski	1836-1924	Forbes Kingsbury Wilson	1910-1990
Adolph Lewisohn	1849-1938	Edward H. Wisser	1895-1970
Leonard Lewisohn	1847-1902	Pope Yeatman	1861-1953

Mining Foundation of the Southwest

Officers

David Travis - *President*
 Chris Wilson - *Vice President*
 Andrew Soderman - *Secretary*
 John Fenn - *Treasurer*

Board of Governors

Jean Austin
 Mark Baker
 Robin Barnes
 Amanda Best
 Roshan B. Bhappu
 Donald F. Earnest
 William E. Hawes
 Corolla (Cori) Hoag
 Martin C. Kuhn
 Terry McNulty
 Rebecca Martinez
 Nyal Niemuth
 Ronald J. Roman
 Brad Ross
 Luiz Steinberg
 Donald R. Taylor
 William H. Wilkinson
 Rod Woodcock

Gold Members

Thomas L. Aldrich
 Curtis Bilow
 Stanley Dempsey
 John Fenn
 Nitin Goel
 Gary J. Goldberg
 Shawn Hamilton
 William E. Hawes
 Corolla (Cori) Hoag
 Steven C. Holmes
 Terry McNulty
 Thomas Scartaccini
 Thomas D. Toole
 David Travis
 J. Steven Whisler
 William H. Wilkinson

Honorary Members

Armine Frederick Banfield
 Michael Canty
 Marvin A. Hustad
 William C. Peters

Sustaining Members

Lawrence G. Dykers
 Timothy R. Snider

Silver Members

John Alden
 Doug Arnold
 Kathy Arnold
 Jean Austin
 R. Gene Dewey
 Donald F. Earnest
 Theodore H. Eyde
 Richmond Fenn
 Barbara Filas
 Nancy Gracia-Gungor
 John C. Lacy
 Allison Moore
 Brian Norton
 A. Dan Rovig
 Arlan Ruen
 Luiz Steinberg
 Mark Sutton
 Lyn Thomas
 Susan Wick
 Pamela A.K. Wilkinson

In Memoriam

Kevin Horstman
 J. Burgess Winter



MFSW Outreach Coordinators

PAMELA A.K. WILKINSON
pkwilkinson@email.arizona.edu

MOLLY RADWANY
mradwany@email.arizona.edu

Lowell Institute for Mineral Resources
The University of Arizona



LEFT TO RIGHT: Tom Scartaccini, Pam Wilkinson, Brad Ross, Molly Radwany, HOF Chair Chris Wilson, Rebecca Martinez, Mark Baker, and MFSW President David Travis.

SPECIAL THANKS

The American Mining Hall of Fame Committee of the Mining Foundation of the Southwest wishes to thank Modular Mining Systems, Inc. for its continued support in overseeing the production of this program.