



**Third Annual**

**American**

**Mining Hall of Fame**

**Awards Presentation**

**and Banquet**

**December 7, 1985**

# PROGRAM

Hosted * Reception	6:30 P.M.
Banquet Dinner	7:30 P.M.
Ceremony	9:00 P.M.

Welcoming Remarks

Introduction of Head Table and Other Honored Guests

Presentation of 1985 Inductees

Introduction of 1985 Recipient

Featured Address - George B. Munroe

Some Thoughts on the Outlook on  
U.S. Copper (or) Can We Teach  
the Sultan's Black Horse to Talk?



SPONSORED BY:  
Mining Club of the Southwest Foundation, Inc.

\* Hosted by Modular Mining Systems, Inc.



# AMERICAN MINING HALL OF FAME



**GEORGE B. MUNROE**

**1985 Recipient**

George B. Munroe graduated from Dartmouth College in 1943 and, following service in the U.S. Navy, from Harvard Law School in 1949. He then attended Christ Church College, Oxford University, as a Rhodes Scholar, receiving a B.A. degree in 1951.

After several years of government service in Germany and the practice of law in New York, Mr. Munroe joined Phelps Dodge Corporation in 1958. He was elected a Vice President in 1962, and President and a director in 1966. He became chief executive officer in 1969, and was elected Chairman of the Board in 1975, continuing as chief executive officer.

In 1969, the year in which Mr. Munroe became chief executive, Phelps Dodge produced 224,200 tons of copper – a record year for the company, which has mined copper in Arizona since 1881. In 1985, the company will produce about 400,000 tons – another record – and Phelps Dodge is now the country's largest producer of copper. The Tyrone and Metcalf mines, the Hidalgo smelter, and the company's modern continuous cast rod mills in El Paso, Texas, and Norwich, Connecticut, all were completed during his tenure.

Mr. Munroe is a director of the American Mining Congress, the Copper Development Association, the International Copper Research Association, and a number of corporations and educational institutions.



**Mining Club of the Southwest Foundation**

**Tucson, Arizona      December 7, 1985**

# AMERICAN MINING HALL OF FAME



**IRA BEAMAN JORALEMON**

1884 - 1975

1985 Inductee

Ira Joralemon graduated from Harvard in 1907 with a Mining and Metallurgy degree, began his profession with Calumet and Arizona at Bisbee and by 1922 was Assistant General Manager. This period also included mine examinations of the High Andes, Russia, World War I duty with the U.S. Air Service, and being knighted Chevalier Legion of Honor.

Between 1922 and 1972, Joralemon maintained an eminent and global practice as Consulting Engineer and Geologist in San Francisco, becoming a Director of Homestake, Copper Range, Bunker Hill, Bralorne, and Chairman, A.E.C. Raw Materials Advisory Committee.

Joralemon authored many technical papers and three popular books on mining, was Honorary Member and Director of A.I.M.E., President of S.E.G., Councilor of the Mining and Metallurgical Society of America, and member of the American Mining Congress.

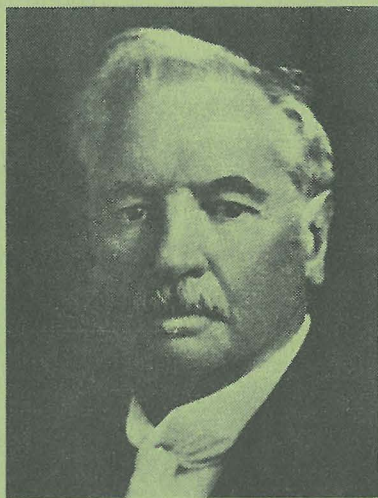


**Mining Club of the Southwest Foundation**

**Tucson, Arizona    December 7, 1985**



# AMERICAN MINING HALL OF FAME



## CURTIS HOLBROOK LINDLEY

1850 - 1920

1985 Inductee

Curtis H. Lindley was born in Marysville, California, the son of a '49er, and grew up in the mining camps of the Mother Lode and the Comstock. He is regarded as the pre-eminent mining lawyer and legal scholar related to the general mining laws of the United States, and tried many of the cases that shaped modern interpretation of mining law. Lindley's greatest contribution to the legal and mining professions was *Lindley on Mines*, a treatise on the law of mines first published in 1897. Lindley's careful reasoning and his unhesitating offers of well-reasoned opinions where no precedent existed was rewarded by the widespread adoption of his views by the courts and recognition of his work as a classic of American jurisprudential literature. The durability of the mining law stands as testimony to the vitality breathed into it by Lindley.

Nearly three-quarters of a century after Lindley's death, mining lawyers and the minerals profession as a whole continue to consult and rely on the wisdom of *Lindley on Mines*.



**Mining Club of the Southwest Foundation**

Tucson, Arizona

December 7, 1985

# AMERICAN MINING HALL OF FAME

## 1983 RECIPIENT

George E. Atwood

## 1984 RECIPIENT

Charles F. Barber

## 1983 & 1984 INDUCTEES

Maxie L. Anderson

1934 - 1983

James Douglas

1837 - 1918

Charles F. Fogarty

1921 - 1981

Antoine M. Gaudin

1896 - 1974

Hal W. Hardinge

1855 - 1943

Daniel C. Jackling

1869 - 1956

Henry Krumb

1875 - 1958

Waldemar Lindgren

1860 - 1939

Seeley W. Mudd

1861 - 1926

Arthur F. Taggart

1884 - 1959

Herbert C. Hoover

1874 - 1964

Robert H. Richards

1844 - 1945



## **MINING CLUB OF THE SOUTHWEST and AMERICAN MINING HALL OF FAME**

It could be said that a mining club in the southwest had its beginnings when the Spanish conquistadores came into the area with minerals on their minds and swapped ideas over a bottle of wine. For the last 100 years miners have talked about a place where they could get together. As copper production in the southwest grew and centered about Tucson, so did the need for a mining club.

The Mining Club of the Southwest, as it now exists, was spawned in late 1970 by a group of Tucson based engineers, metallurgists and geologists; opened its doors officially on February 1, 1971; and was incorporated by the State of Arizona on February 22, 1971.

The Mining Club of the Southwest is governed by a group of 24 Board members who serve for a term of three years; one-third of which are elected at the annual meeting each year in February. The immediate past president acts as the 25th governor. Officers and committee chairmen are chosen from members of the Board.

Several allied groups use the Club meeting rooms regularly. Such groups are Southwestern Minerals Exploration Association, Arizona Prospector and Small Mine Operators Association, and Women in Mining. Many groups schedule occasional meetings in the Club quarters.

In the fall of 1981 the Mining Club of the Southwest sponsored the highly successful Second Mexican Mining Rail Excursion. Participants visited mines, mills and smelters throughout Mexico during the specially arranged two-week tour, and enjoyed unforgettable hospitality from their Mexican hosts.

Shortly thereafter the MCSW Foundation was established to allow for tax deductible contributions to be used for charitable and educational purposes. To date students of the College of Mines, University of Arizona, have benefitted from the proceeds. Another significant Foundation accomplishment occurred on December 3, 1983, when the American Mining Hall of Fame was inaugurated to honor significant contributors to the industry and profession, and to provide a forum for better public understanding of the industry. Currently the American Mining Hall of Fame may be visited at the headquarters of the Mining Club of the Southwest.

Leading mining companies, members and friends have donated photographs and artifacts which give the Club decor its unique flavor and appeal and add to the authentic atmosphere. Over the years this collection has provided not only indoor charm, but also a large outdoor exhibit of ancient mining equipment as well.



## **1985 MCSW OFFICERS**

**R. Brantley Sudderth, President**

**Michael N. Greeley, First Vice President**

**Marvin A. Hustad, Second Vice President**

**William C. Peters, Third Vice President**

**Charles F. Thompson, Treasurer**

**Gordon R. Wynne, Secretary**

## **1985 HALL OF FAME COMMITTEE**

**Martin C. Kuhn, Chairman**

**Samye N. Buckner**

**R. Brantley Sudderth**

**John C. Lacy**

**Walter E. Heinrichs**